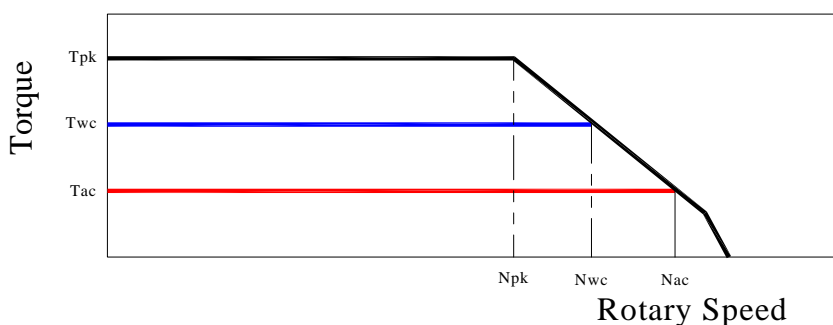
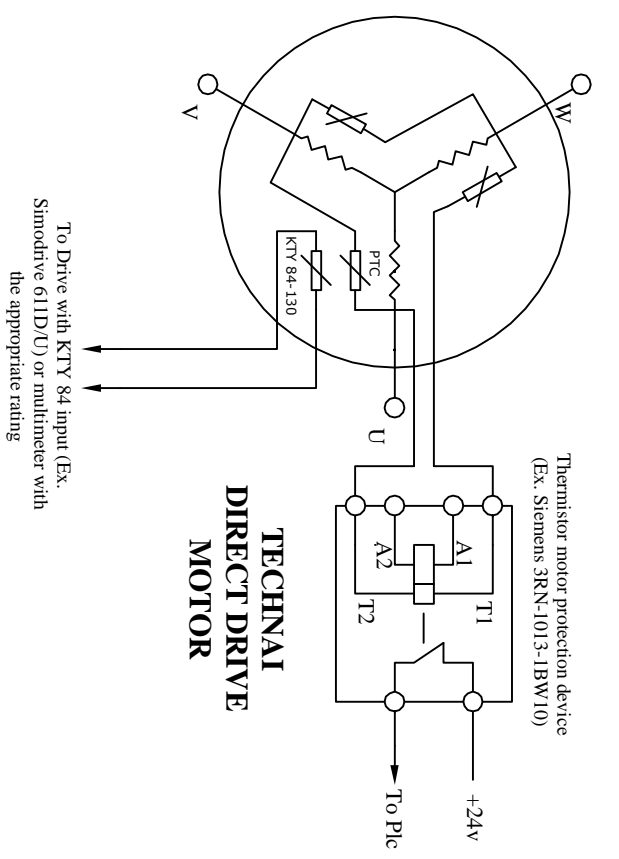
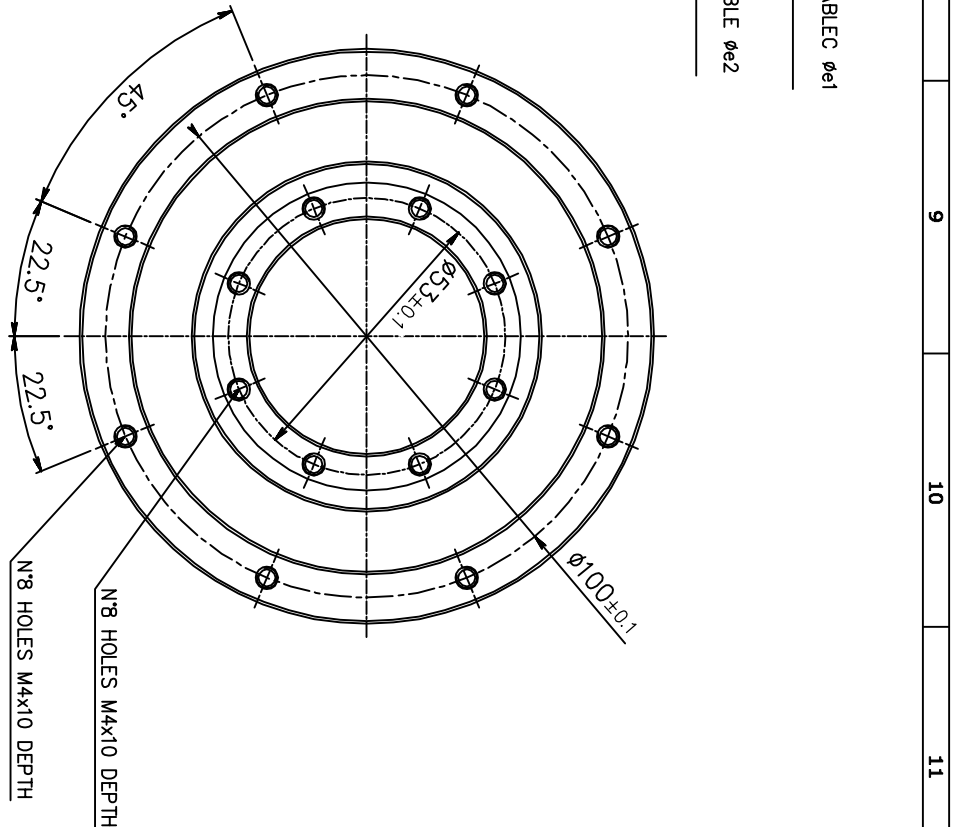
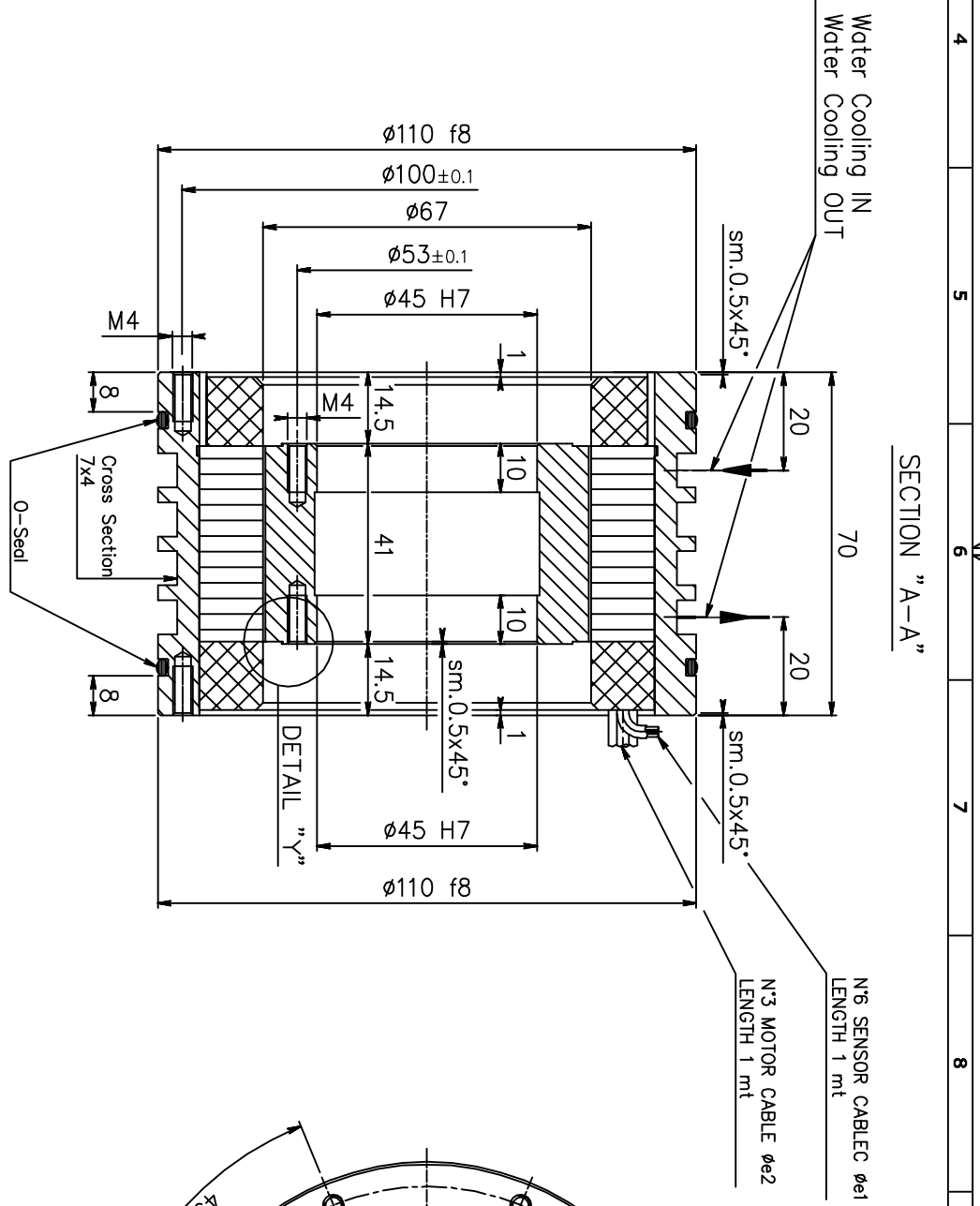
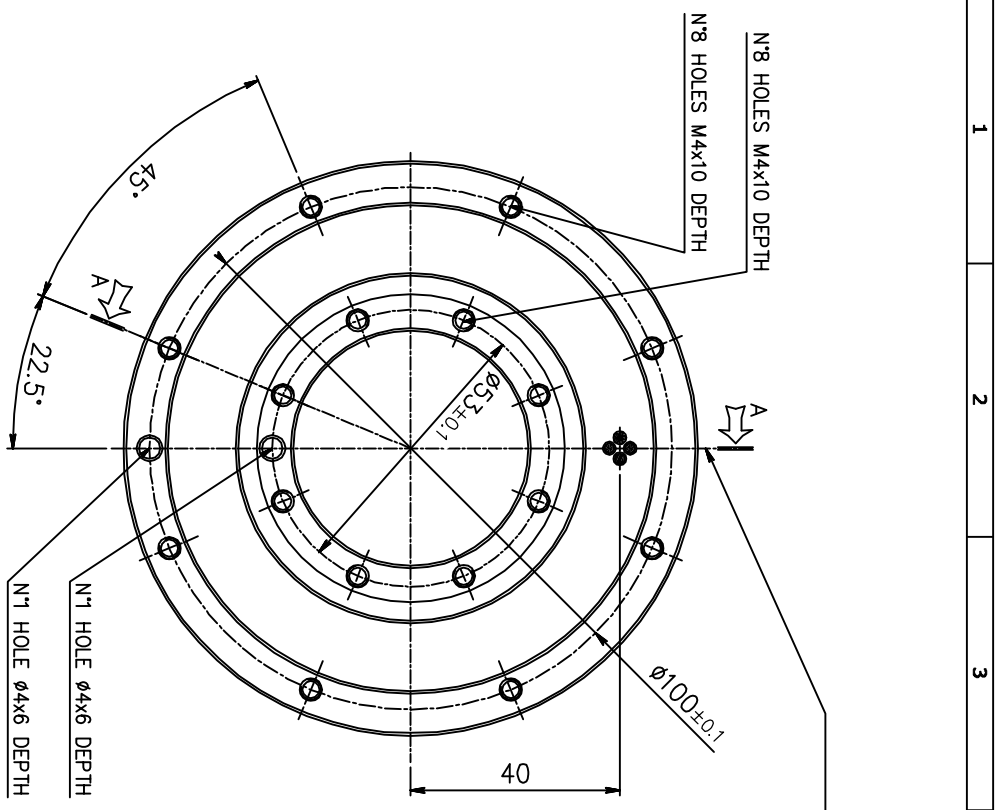


TORQUE MOTOR - MK-CI 93-040 WA

Motor specification	Symbol	Unit	
Number of pole	P		22
Peak Torque	T _{pk}	Nm	17,8
Continuos Torque (Water Cooling Dt100)	T _{wc}	Nm	10,2
Continuos Torque (Air Cooling Dt100)	T _{ac}	Nm	4,3
Stall Torque (Water Cooling)	T _{wsc}	Nm	7,8
Stall Torque (Air Cooling)	T _{sac}	Nm	2,85
Ripple Torque (Cogging Torque)	Tr	Nm	0,05
Power Loss at T _{wc}	P _{wc}	Kw	0,6
Power Loss at T _{ac}	P _{ac}	Kw	0,1
Termal Resistance Water Cooling	R _{thWc}	Kw	0,188
Termal Resistance Air Cooling	R _{thAc}	Kw	1,033
Torque Constant	K _t	Nm/a	3,3
Back EMF Constant	K _e	V/1000 Rpm	198,7
Maximum Speed at I _{pk} at 600 Vdc	N _{pk}	rpm	750
Maximum Speed at I _{wc} at 600 Vdc	N _{wc}	rpm	1400
Maximum Speed at I _{ac} at 600 Vdc	N _{ac}	rpm	2000
Winding Resistance (Phase to Phase)	R ₂₀	Ω	25,5
Winding Inductance (Phase to Phase)	L	mh	28,8
Peak Current	I _{pk}	Arms	7,8
Continuos Current (Water Cooling Dt100)	I _{wc}	Arms	3,2
Continuos Current (Air Cooling Dt100)	I _{ac}	Arms	1,35
Stall Current at 0 Speed (Water Cooling)	I _{wsc}	Arms	2,45
Stall Current at 0 Speed (Air Cooling)	I _{sac}	Arms	1
Maximum Winding Temperature		°C	130
Height of Rotor		mm	40
Height of Stator		mm	75
Stator jacket outer diameter		mm	110

Torque diagram

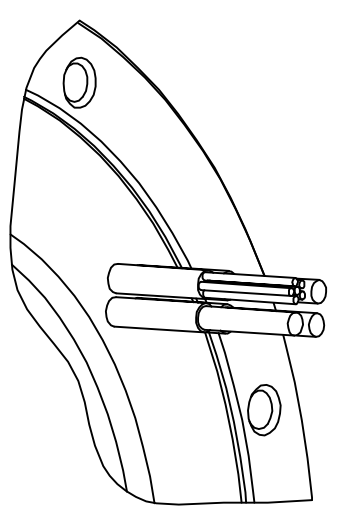




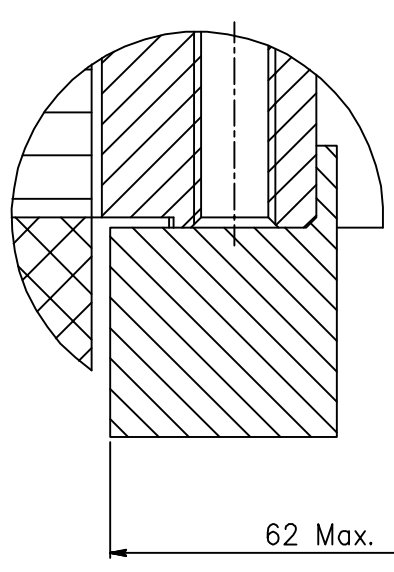
**TECHNAI
DIRECT DRIVE
MOTOR**

To Drive with KTY 84 input (Ex. Simodrive 611D/U) or multimeter with the appropriate rating

**CABLE OUTPUT
CONFIGURATION**



**DETAIL "Y"
ROTOR INTERFACE TO
CUSTOMER SHAFT**



M. MODEL		DESCRIZIONE	
RAW MATERIAL		GENERAL ASSEMBLY	
RAW DIMENSIONS		MACHINE	
DESIGNER		SHEET	
DATE		1 OF 1	
TECHNAI		MK-CI 93-040	
28.03.2010		COD. MK-CI 93-040	
mm. 0		10 20 30 40 50 60 70 80 90 100	
A2		A2	

Proprietà esclusiva di TECHNAI Team s.r.l. - Riproduzione e diffusione vietata, salvo autorizzazione scritta.