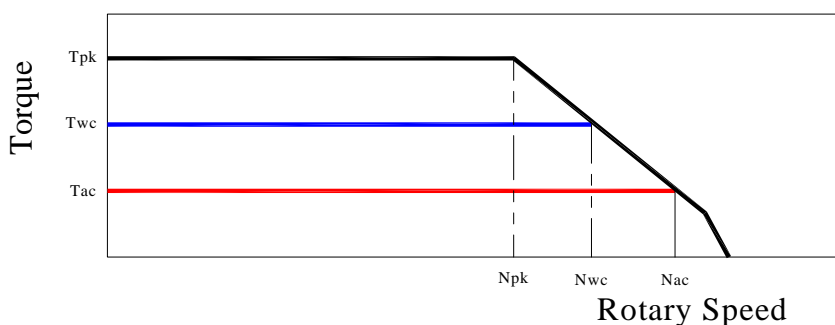
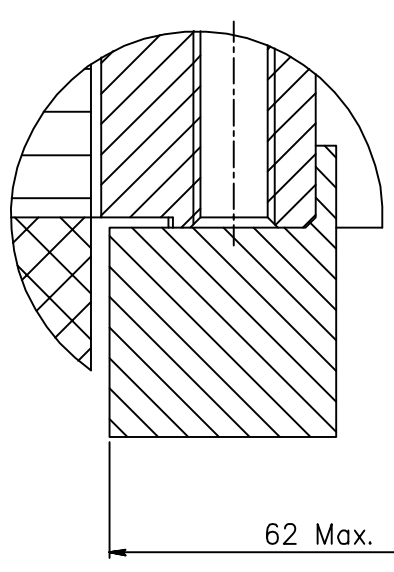
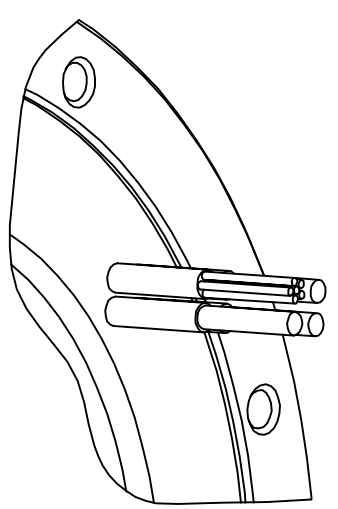
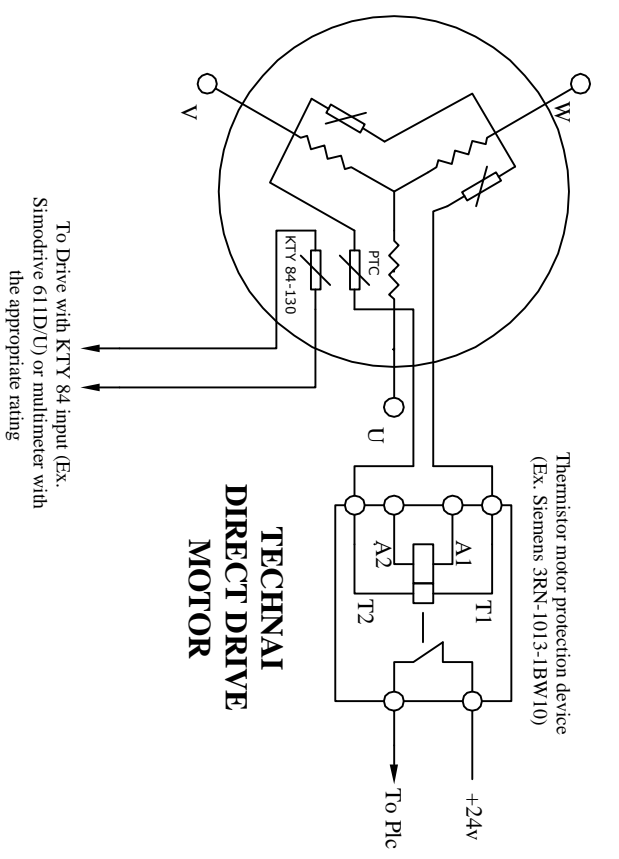
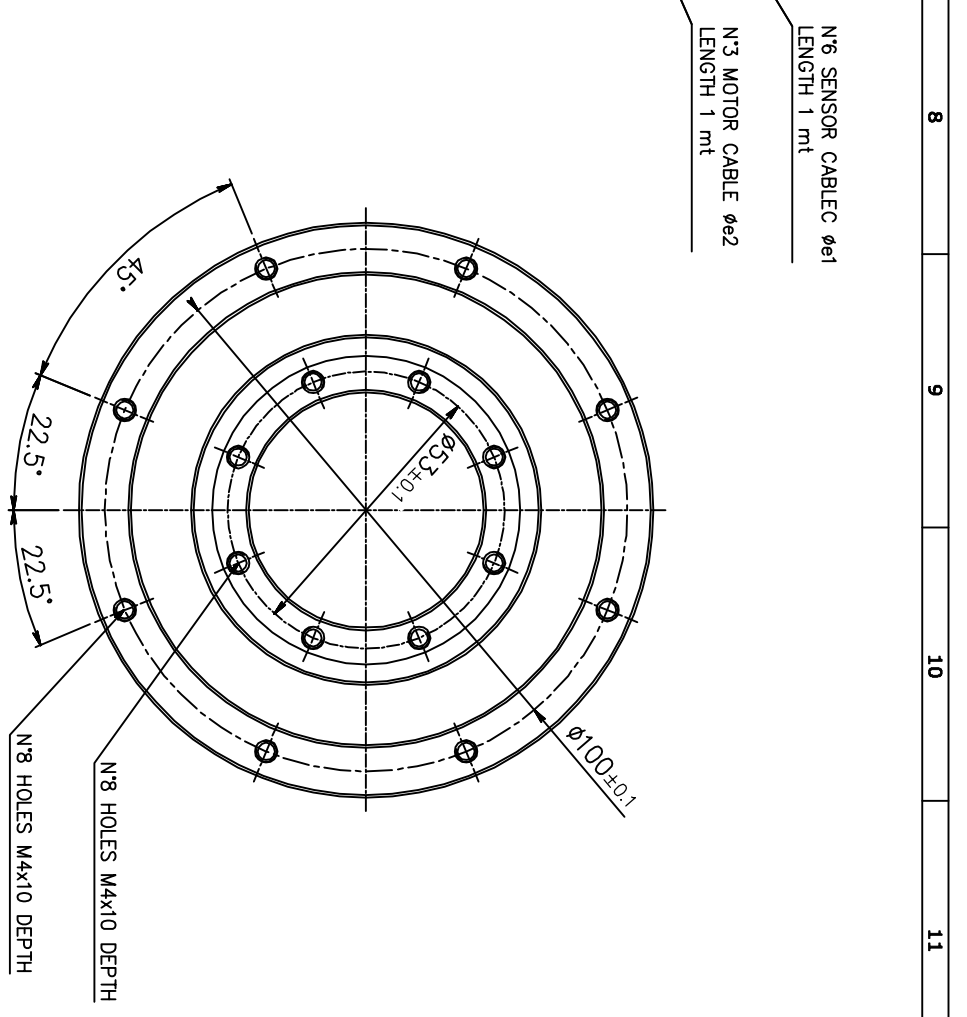
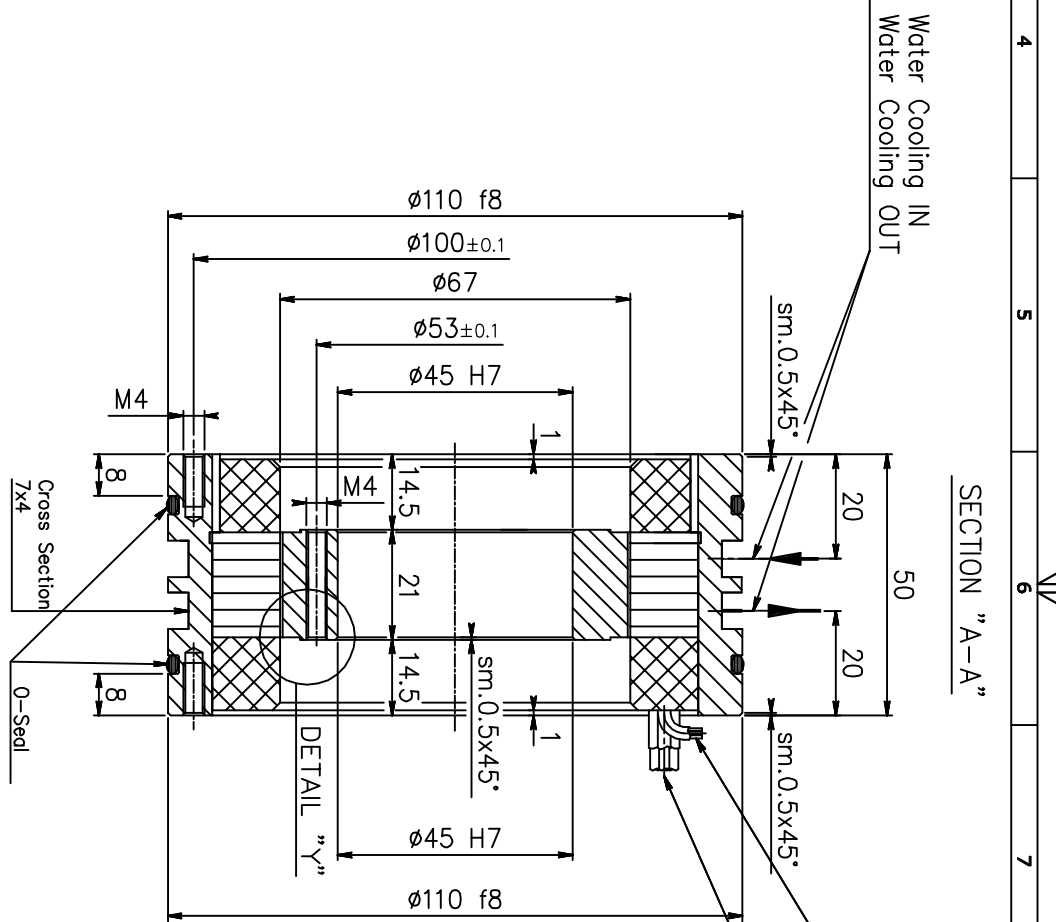
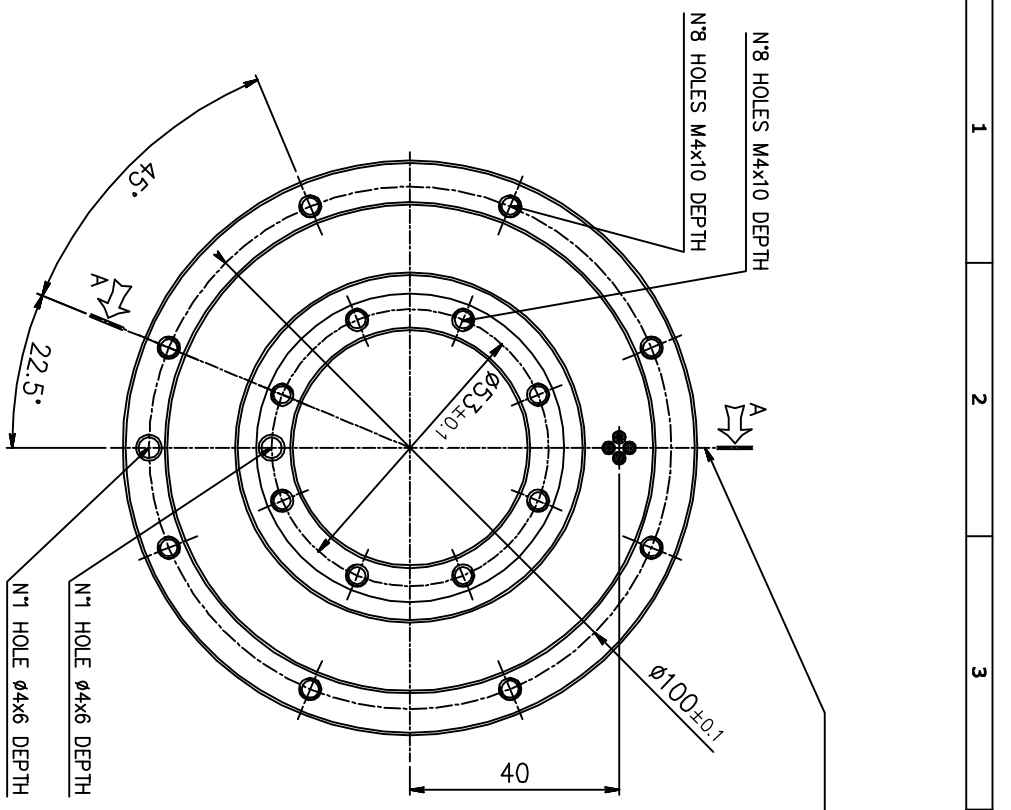


## TORQUE MOTOR - MK-CI 93-020 WA

| Motor specification                         | Symbol            | Unit       |       |
|---|-------------------|------------|-------|
| Number of pole                              | P                 |            | 22    |
| Peak Torque                                 | T <sub>pk</sub>   | Nm         | 9     |
| Continuos Torque (Water Cooling Dt100)      | T <sub>wc</sub>   | Nm         | 5,4   |
| Continuos Torque (Air Cooling Dt100)        | T <sub>ac</sub>   | Nm         | 2,2   |
| Stall Torque (Water Cooling)                | T <sub>wsc</sub>  | Nm         | 4,2   |
| Stall Torque (Air Cooling)                  | T <sub>sac</sub>  | Nm         | 1,7   |
| Ripple Torque (Cogging Torque)              | Tr                | Nm         | 0,05  |
| Power Loss at T <sub>wc</sub>               | P <sub>wc</sub>   | Kw         | 0,5   |
| Power Loss at T <sub>ac</sub>               | P <sub>ac</sub>   | Kw         | 0,08  |
| Termal Resistance Water Cooling             | R <sub>thWc</sub> | Kw         | 0,211 |
| Termal Resistance Air Cooling               | R <sub>thAc</sub> | Kw         | 1,206 |
| Torque Constant                             | K <sub>t</sub>    | Nm/a       | 1,6   |
| Back EMF Constant                           | K <sub>e</sub>    | V/1000 Rpm | 99,4  |
| Maximum Speed at I <sub>pk</sub> at 600 Vdc | N <sub>pk</sub>   | rpm        | 2000  |
| Maximum Speed at I <sub>wc</sub> at 600 Vdc | N <sub>wc</sub>   | rpm        | 2000  |
| Maximum Speed at I <sub>ac</sub> at 600 Vdc | N <sub>ac</sub>   | rpm        | 2000  |
| Winding Resistance (Phase to Phase)         | R <sub>20</sub>   | Ω          | 18,2  |
| Winding Inductance (Phase to Phase)         | L                 | mh         | 15,5  |
| Peak Current                                | I <sub>pk</sub>   | Arms       | 7,8   |
| Continuos Current (Water Cooling Dt100)     | I <sub>wc</sub>   | Arms       | 3,4   |
| Continuos Current (Air Cooling Dt100)       | I <sub>ac</sub>   | Arms       | 1,45  |
| Stall Current at 0 Speed (Water Cooling)    | I <sub>wsc</sub>  | Arms       | 2,6   |
| Stall Current at 0 Speed (Air Cooling)      | I <sub>sac</sub>  | Arms       | 1,1   |
| Maximum Winding Temperature                 |                   | °C         | 130   |
| Height of Rotor                             |                   | mm         | 20    |
| Height of Stator                            |                   | mm         | 55    |
| Stator jacket outer diameter                |                   | mm         | 110   |

### Torque diagram





CABLE OUTPUT CONFIGURATION

DETAIL "Y"  
ROTOR INTERFACE TO CUSTOMER SHAFT

|                 |  |                                |  |
|-----------------|--|--------------------------------|--|
| K. MODEL        |  | DESCRIZIONE                    |  |
| RAW MATERIAL    |  | GENERAL ASSEMBLY               |  |
| RAW DIMENSIONS  |  | MACHINE                        |  |
| TREATMENT       |  | COD. MK-CI 93-020              |  |
| DESIGNER        |  | SHEET                          |  |
| TECHNAI         |  | 1 of 1                         |  |
| DATE 28.03.2010 |  | SCALE                          |  |
| SCALE           |  | mm. 0                          |  |
| SCALE           |  | 10 20 30 40 50 60 70 80 90 100 |  |
| SCALE           |  | A2                             |  |

Proprietà esclusiva di TECHNAI Team s.r.l. - Riproduzione e diffusione vietata, salvo autorizzazione scritta.