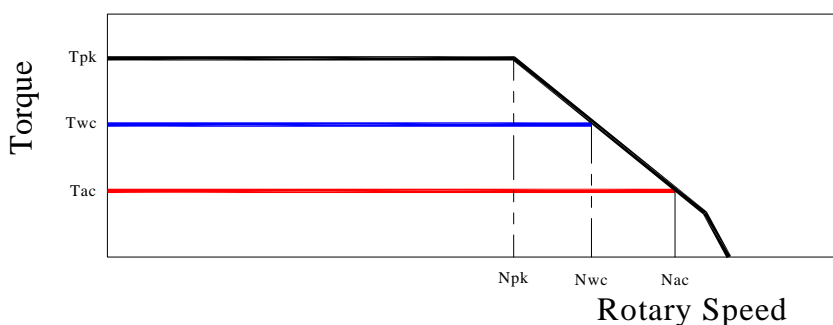
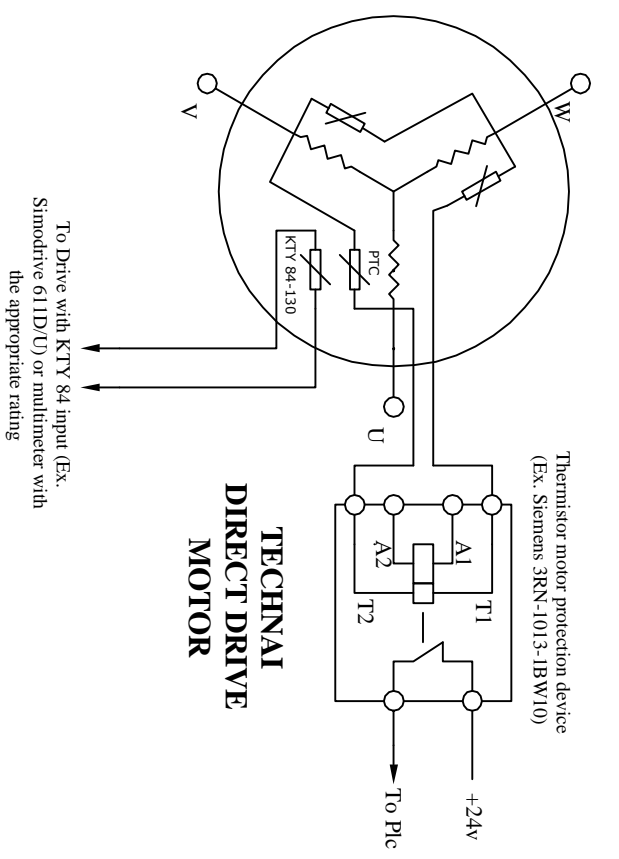
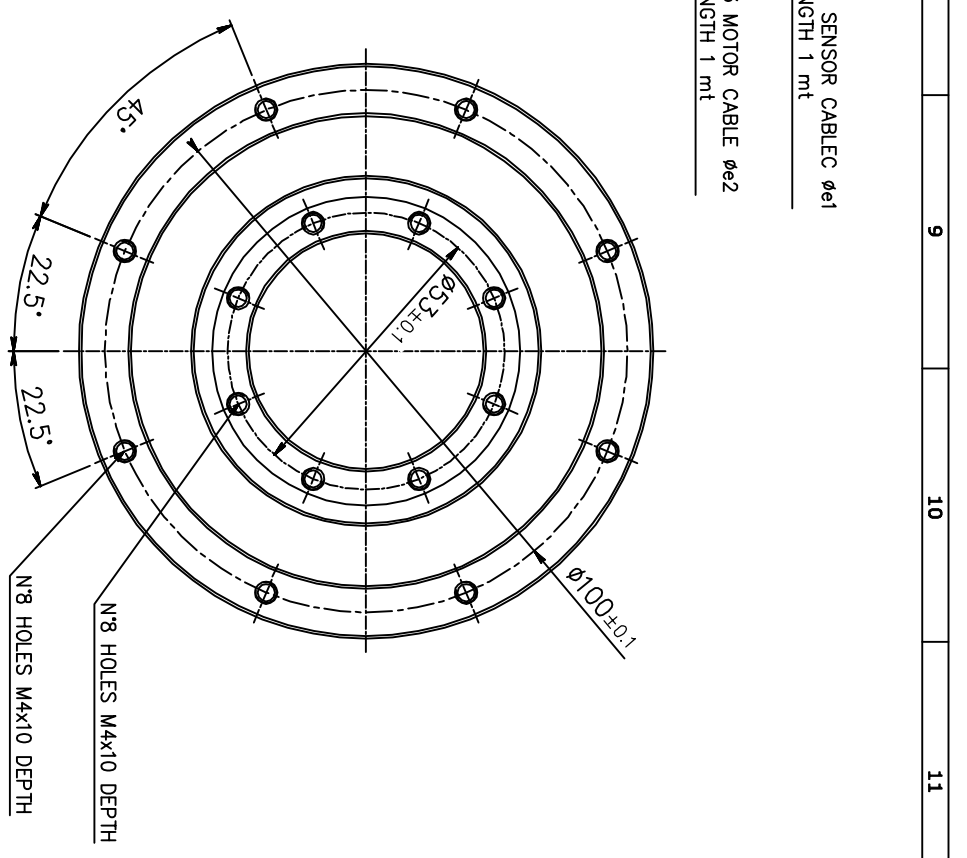
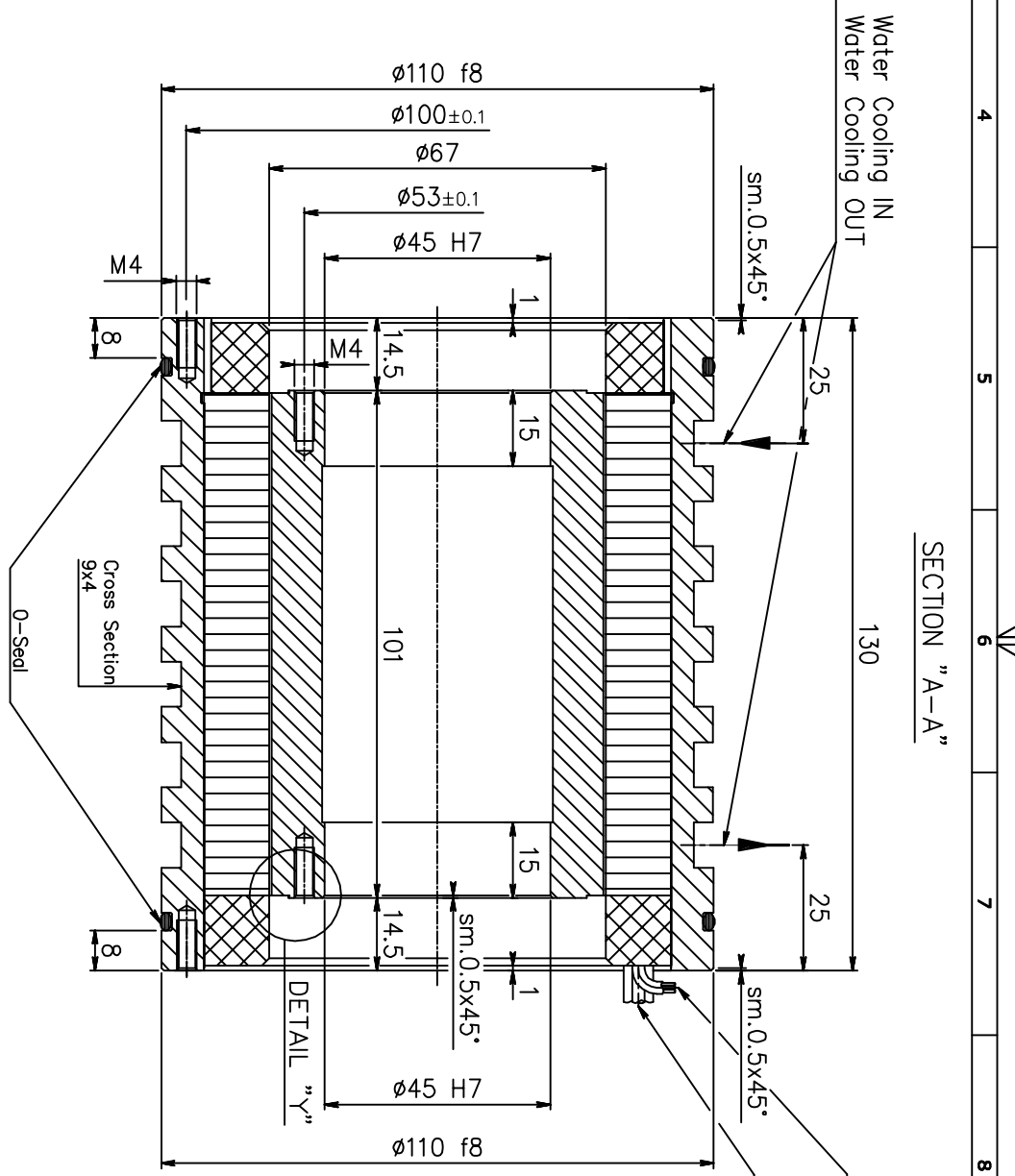
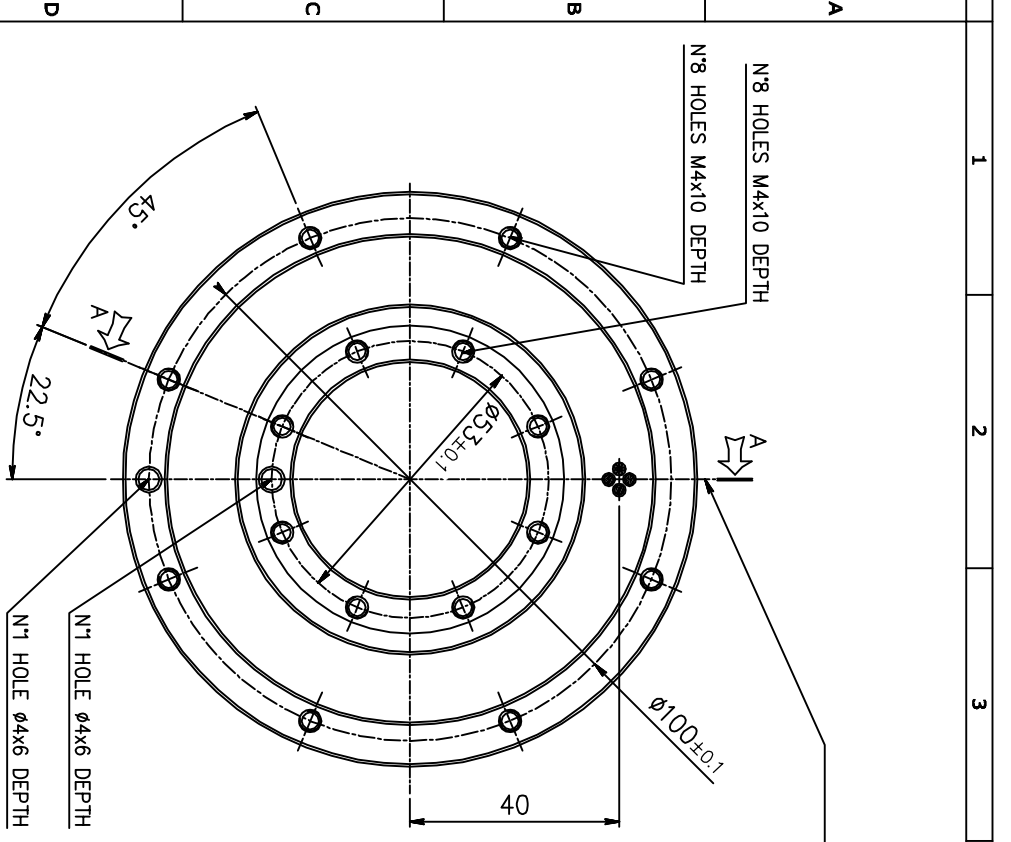


TORQUE MOTOR - MK-CI 93-100 WA

Motor specification	Symbol	Unit	
Number of pole	P		22
Peak Torque	Tpk	Nm	43
Continuos Torque (Water Cooling Dt100)	Twc	Nm	22
Continuos Torque (Air Cooling Dt100)	Tac	Nm	10
Stall Torque (Water Cooling)	Twsc	Nm	16,8
Stall Torque (Air Cooling)	Tsac	Nm	7,5
Ripple Torque (Cogging Torque)	Tr	Nm	0,1
Power Loss at Twc	Pwc	Kw	0,76
Power Loss at Tac	Pac	Kw	0,14
Termal Resistance Water Cooling	RthWc	Kw	0,132
Termal Resistance Air Cooling	RthAc	Kw	0,723
Torque Constant	Kt	Nm/a	5,4
Back EMF Constant	Ke	V/1000 Rpm	327
Maximum Speed at Ipk at 600 Vdc	Npk	rpm	350
Maximum Speed at Iwc at 600 Vdc	Nwc	rpm	900
Maximum Speed at Iac at 600 Vdc	Nac	rpm	1100
Winding Resistance (Phase to Phase)	R20	Ω	19,3
Winding Inductance (Phase to Phase)	L	mh	29,3
Peak Current	Ipk	Arms	11,5
Continuos Current (Water Cooling Dt100)	Iwc	Arms	4,35
Continuos Current (Air Cooling Dt100)	Iac	Arms	1,8
Stall Current at 0 Speed (Water Cooling)	Iswc	Arms	3,3
Stall Current at 0 Speed (Air Cooling)	Isac	Arms	1,4
Maximum Winding Temperature		$^{\circ}\text{C}$	130
Height of Rotor		mm	100
Height of Stator		mm	135
Stator jacket outer diameter		mm	110

Torque diagram

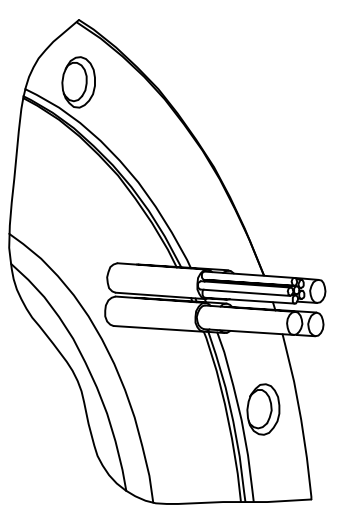




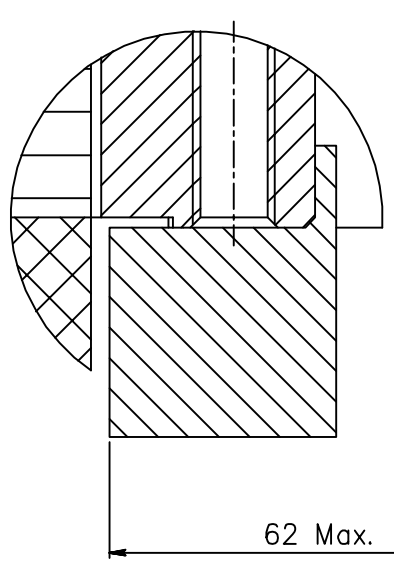
**TECHNAI
DIRECT DRIVE
MOTOR**

To Drive with KTY 84 input (Ex. Simodrive 611D/U) or multimeter with the appropriate rating

**CABLE OUTPUT
CONFIGURATION**



**DETAIL "Y"
ROTOR INTERFACE TO
CUSTOMER SHAFT**



K. MODEL		DESCRIZIONE		GENERAL ASSEMBLY	
RAW MATERIAL		ASSEMBLY		QTY	
RAW DIMENSIONS		MACHINE		ROTOR-STATOR KIT MK-CI 93	
DESIGNER		DATE		SHEET	
TECHNAI		28.03.2010		1 OF 1	
COD.		MK-CI 93-100		mm. 0 10 20 30 40 50 60 70 80 90 100 A2	

Proprietà esclusiva di TECHNAI Team s.r.l. - Riproduzione e diffusione vietata, salvo autorizzazione scritta.