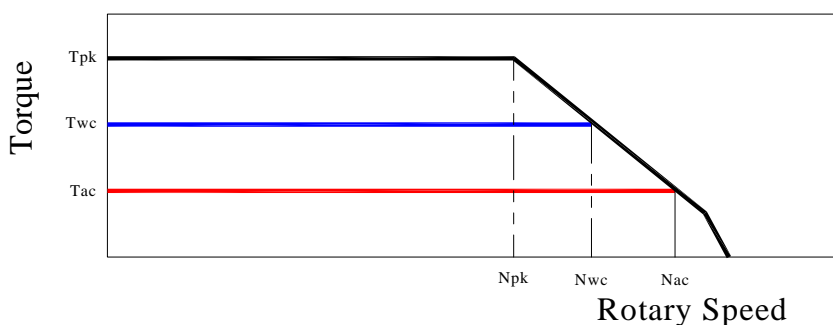


TORQUE MOTOR - MK-CI 290-150 WA

Motor specification	Symbol	Unit	
Number of pole	P		66
Peak Torque	Tpk	Nm	1290
Continuos Torque (Water Cooling Dt100)	Twc	Nm	695
Continuos Torque (Air Cooling Dt100)	Tac	Nm	275
Stall Torque (Water Cooling)	Twsc	Nm	530
Stall Torque (Air Cooling)	Tsac	Nm	210
Ripple Torque (Cogging Torque)	Tr	Nm	6
Power Loss at Twc	Pwc	Kw	5,7
Power Loss at Tac	Pac	Kw	0,95
Termal Resistance Water Cooling	RthWc	Kw	0,02
Termal Resistance Air Cooling	RthAc	Kw	0,12
Torque Constant	Kt	Nm/a	40,6
Back EMF Constant	Ke	V/1000 Rpm	2492
Maximum Speed at Ipk at 600 Vdc	Npk	rpm	10
Maximum Speed at Iwc at 600 Vdc	Nwc	rpm	85
Maximum Speed at Iac at 600 Vdc	Nac	rpm	130
Winding Resistance (Phase to Phase)	R20	Ω	9,1
Winding Inductance (Phase to Phase)	L	mh	31
Peak Current	Ipk	Arms	45,6
Continuos Current (Water Cooling Dt100)	Iwc	Arms	17,3
Continuos Current (Air Cooling Dt100)	Iac	Arms	7
Stall Current at 0 Speed (Water Cooling)	Iswc	Arms	13,22
Stall Current at 0 Speed (Air Cooling)	Isac	Arms	5,4
Maximum Winding Temperature		$^{\circ}\text{C}$	130
Height of Rotor		mm	150
Height of Stator		mm	190
Stator jacket outer diameter		mm	310

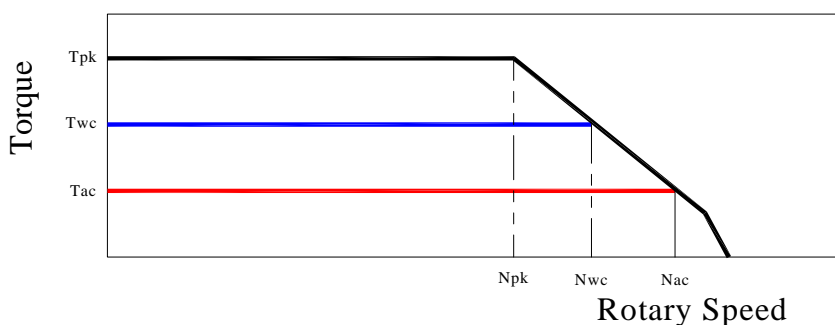
Torque diagram

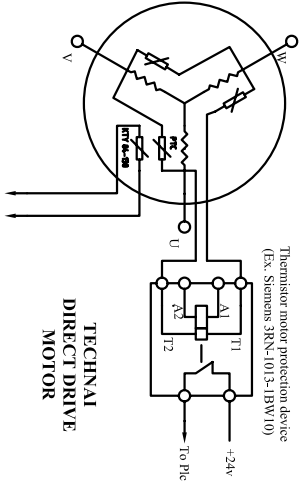
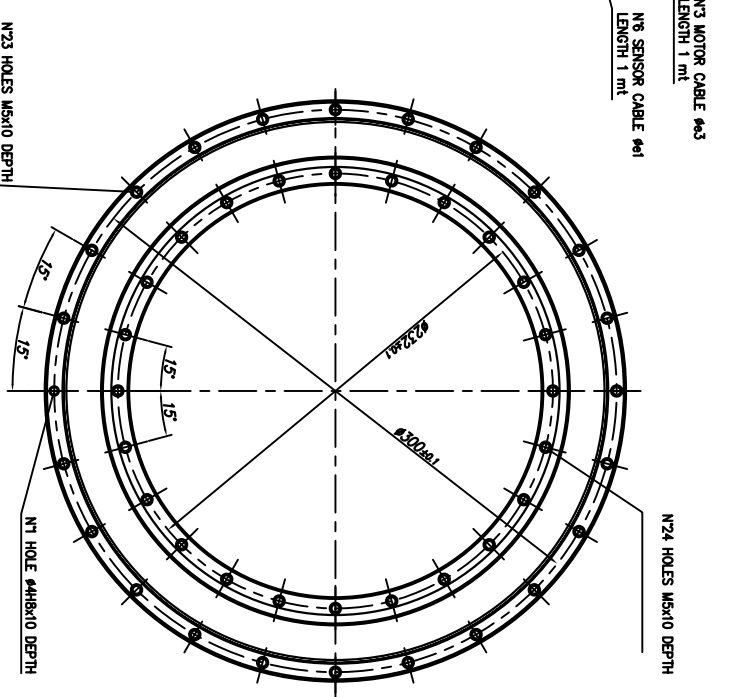
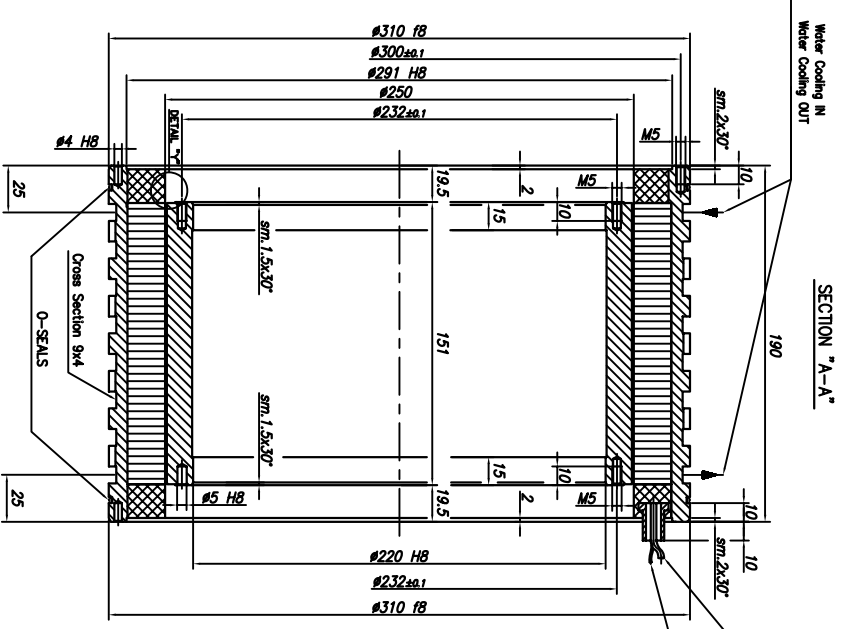
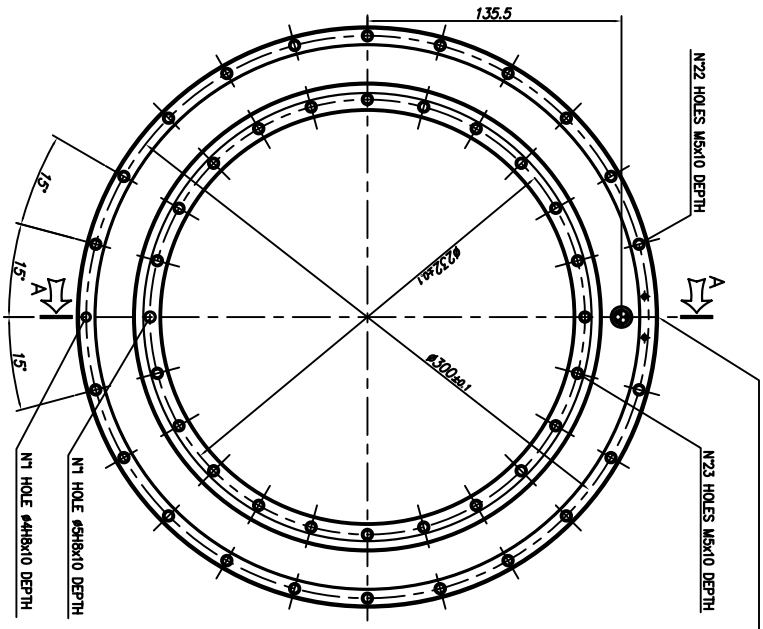


TORQUE MOTOR - MK-CI 290-150 WB

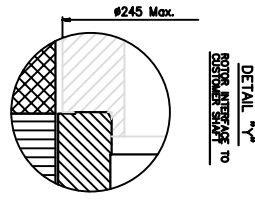
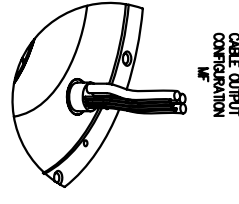
Motor specification	Symbol	Unit	
Number of pole	P		66
Peak Torque	T _{pk}	Nm	1290
Continuos Torque (Water Cooling Dt100)	T _{wc}	Nm	695
Continuos Torque (Air Cooling Dt100)	T _{ac}	Nm	272
Stall Torque (Water Cooling)	T _{wsc}	Nm	531
Stall Torque (Air Cooling)	T _{sac}	Nm	207
Ripple Torque (Cogging Torque)	T _r	Nm	6,1
Power Loss at T _{wc}	P _{wc}	Kw	5,7
Power Loss at T _{ac}	P _{ac}	Kw	0,95
Termal Resistance Water Cooling	R _{thWc}	Kw	0,02
Termal Resistance Air Cooling	R _{thAc}	Kw	0,12
Torque Constant	K _t	Nm/a	20,3
Back EMF Constant	K _e	V/1000 Rpm	1246
Maximum Speed at I _{pk} at 600 Vdc	N _{pk}	rpm	110
Maximum Speed at I _{wc} at 600 Vdc	N _{wc}	rpm	250
Maximum Speed at I _{ac} at 600 Vdc	N _{ac}	rpm	310
Winding Resistance (Phase to Phase)	R ₂₀	Ω	2,27
Winding Inductance (Phase to Phase)	L	mh	7,7
Peak Current	I _{pk}	Arms	91,3
Continuos Current (Water Cooling Dt100)	I _{wc}	Arms	34,7
Continuos Current (Air Cooling Dt100)	I _{ac}	Arms	13,8
Stall Current at 0 Speed (Water Cooling)	I _{wsc}	Arms	26,5
Stall Current at 0 Speed (Air Cooling)	I _{sac}	Arms	10,5
Maximum Winding Temperature		°C	130
Height of Rotor		mm	150
Height of Stator		mm	190
Stator jacket outer diameter		mm	310

Torque diagram

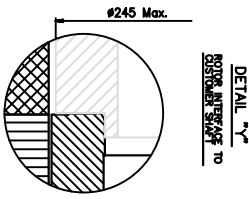
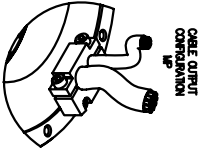
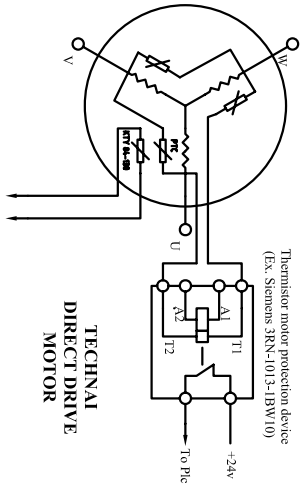
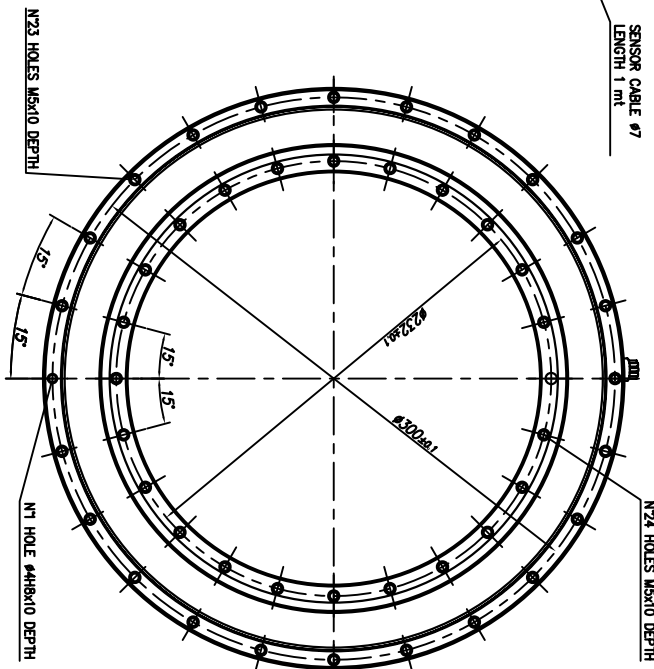
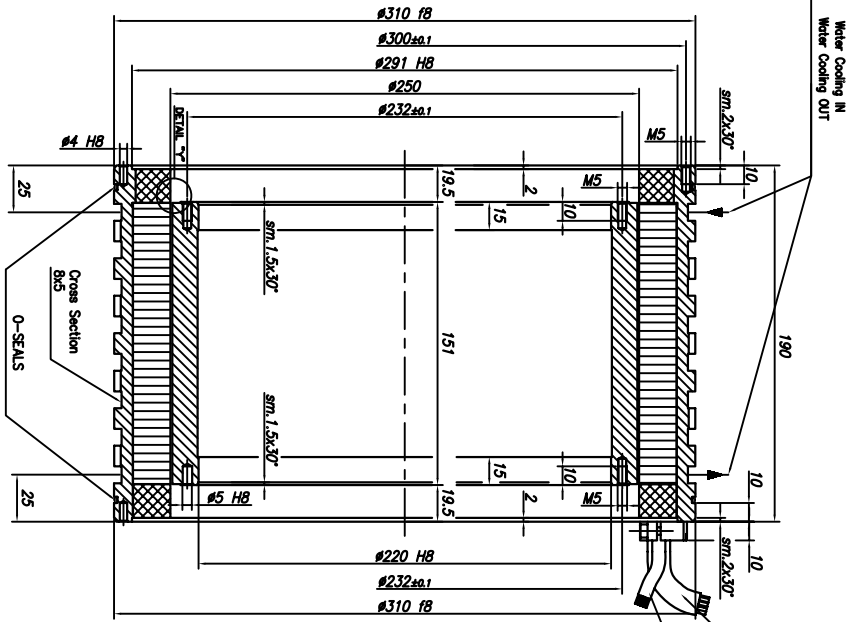
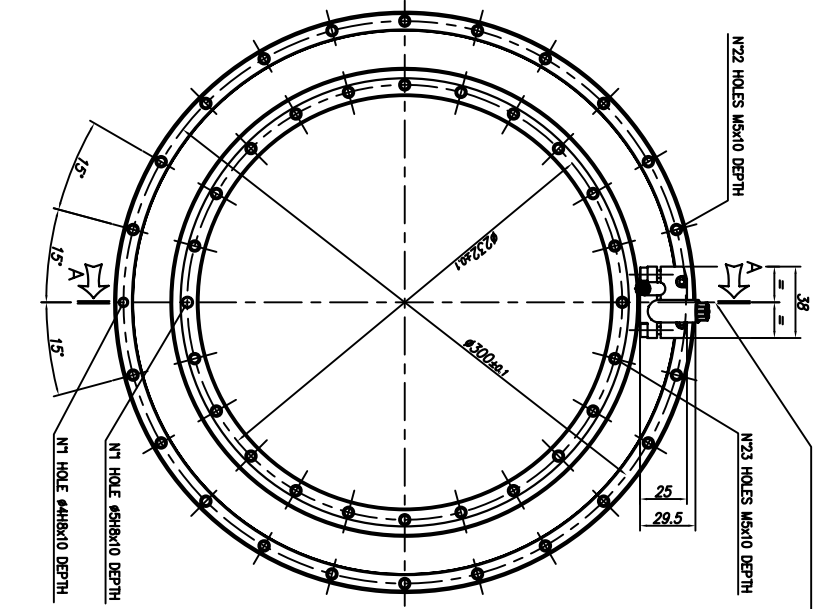




To Drive with KTY 84 input (Ex. Simodrive 611DD) or multimeter with the appropriate rating



GENERAL ASSEMBLY	
ITEM	DESCRIPTION
1	ROTOR-STATOR KIT MK-CI 290
2	MK-CI 290-150 MF
TECHNAI	
Proprietary designs of TECHNAI Trans s.r.l. - Reproduction e diffusione vietata, senza autorizzazione scritta.	

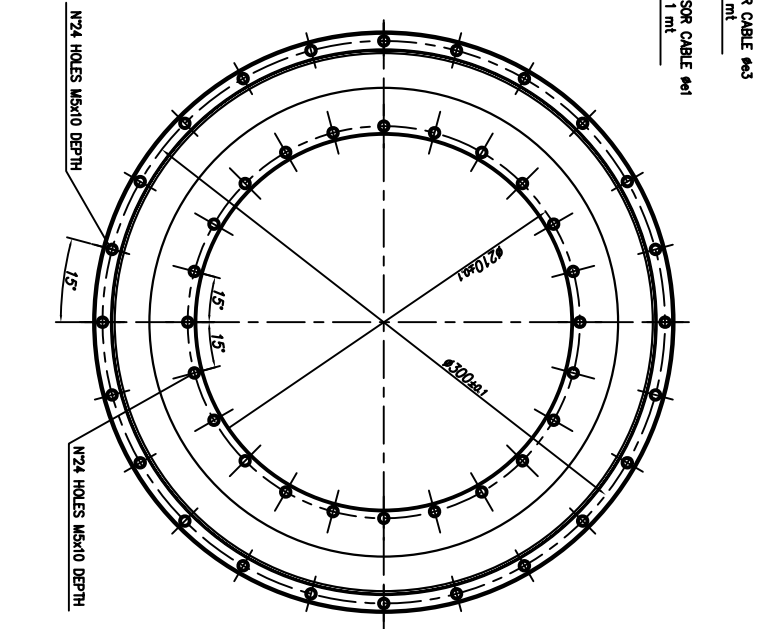
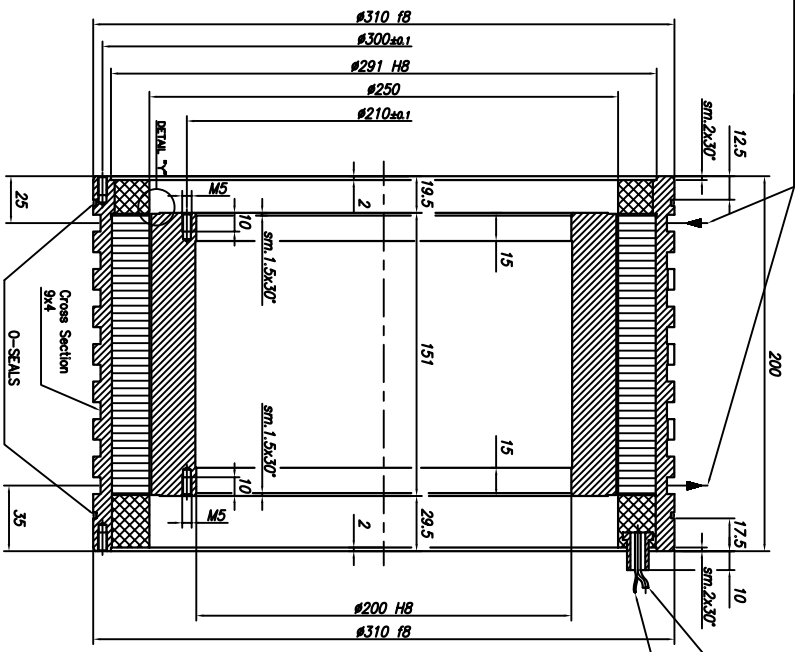
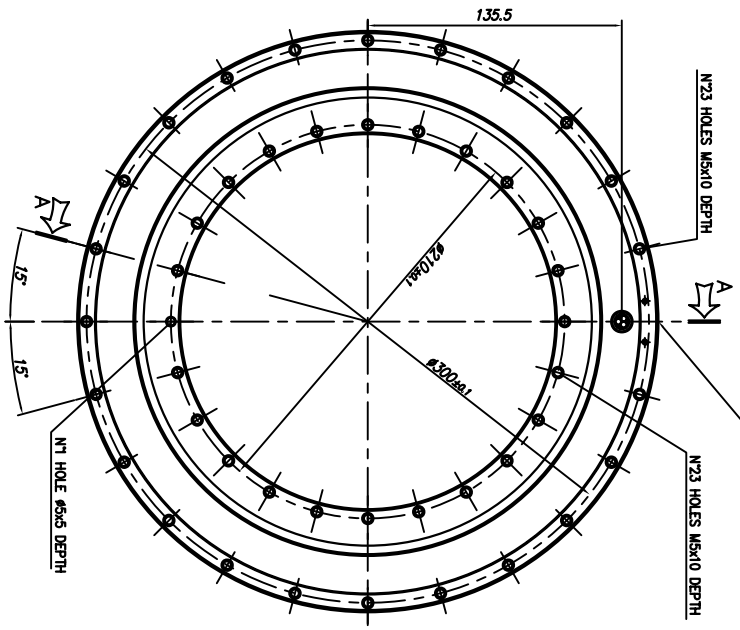


SECTION "A-A"

GENERAL ASSEMBLY	
ITEM	DESCRIPTION
1	TECHNICAL ROTOR-STATOR KIT MK-CI 290
2	MK-CI 290-150 MP
SHEET 1 OF 1	

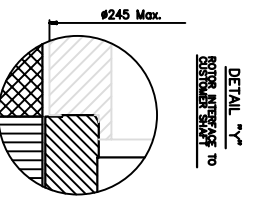
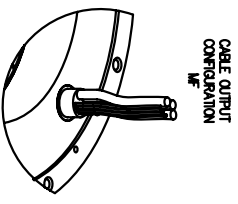
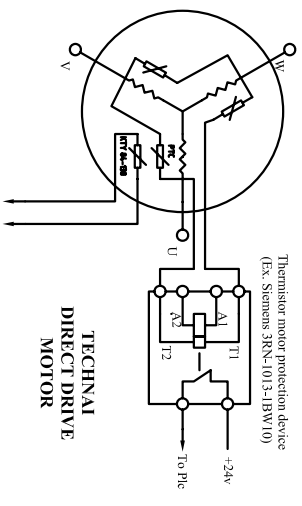
Proprietary sealings of TECHNICAL Trans s.r.l. - Reproductions e diffusioni vietate, salvo autorizzazione scritta.

BY CAD - DO NOT CHANGE MANUALLY

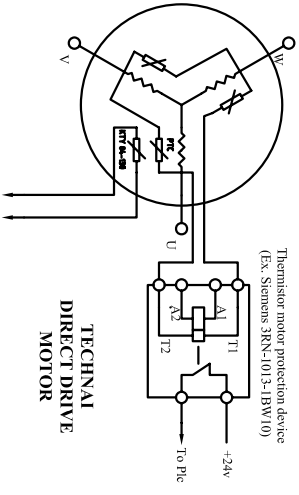
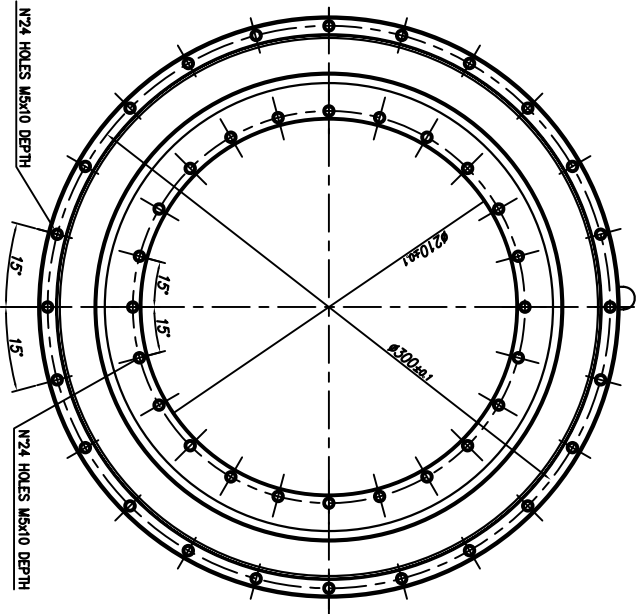
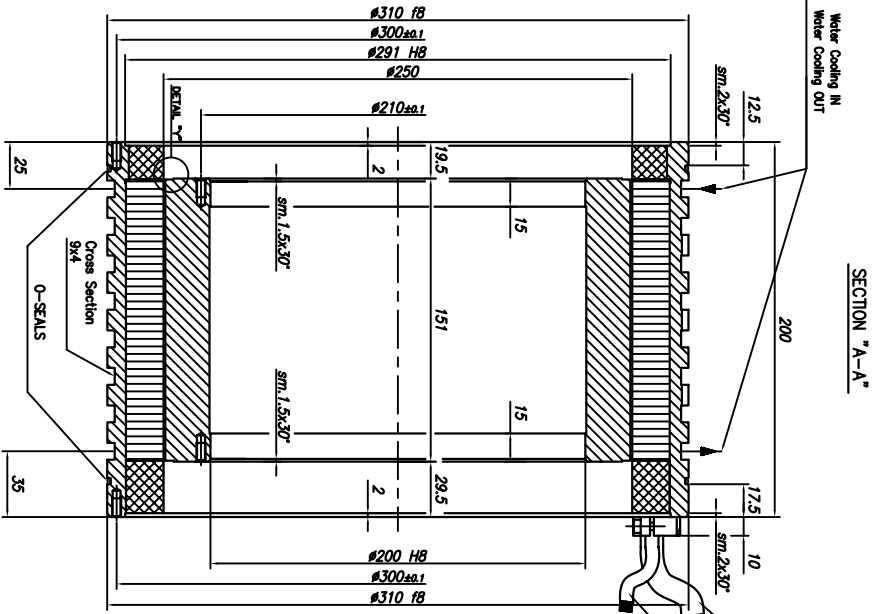
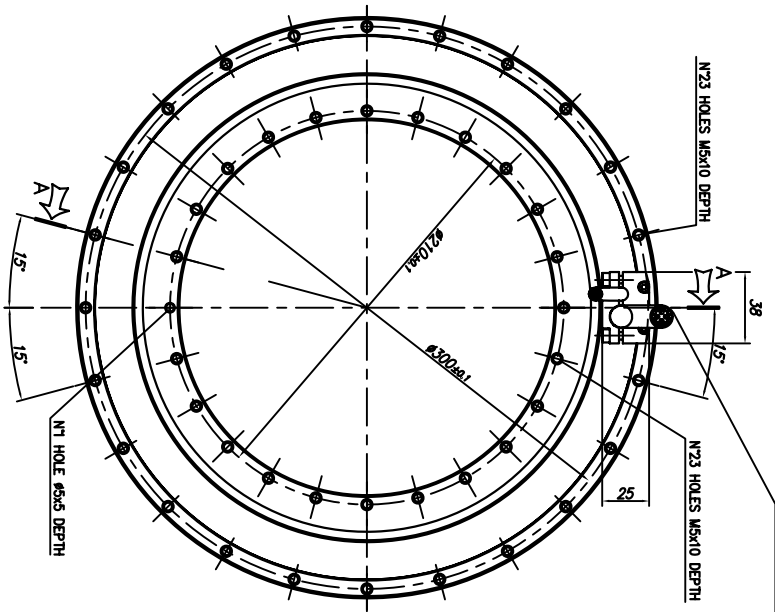


N3 MOTOR CABLE #63
LENGTH 1 mt

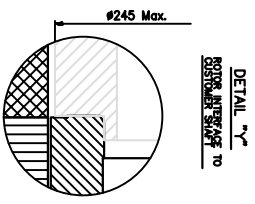
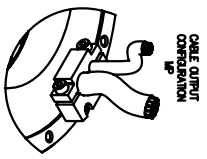
N6 SENSOR CABLE #61
LENGTH 1 mt



GENERAL ASSEMBLY	
ITEM	QTY
1	1
2	1
3	1
4	1
5	1
6	1
7	1
8	1
9	1
10	1
11	1
12	1
13	1
14	1
15	1
16	1
17	1
18	1
19	1
20	1
21	1
22	1
23	1
24	1
25	1
26	1
27	1
28	1
29	1
30	1
31	1
32	1
33	1
34	1
35	1
36	1
37	1
38	1
39	1
40	1
41	1
42	1
43	1
44	1
45	1
46	1
47	1
48	1
49	1
50	1
51	1
52	1
53	1
54	1
55	1
56	1
57	1
58	1
59	1
60	1
61	1
62	1
63	1
64	1
65	1
66	1
67	1
68	1
69	1
70	1
71	1
72	1
73	1
74	1
75	1
76	1
77	1
78	1
79	1
80	1
81	1
82	1
83	1
84	1
85	1
86	1
87	1
88	1
89	1
90	1
91	1
92	1
93	1
94	1
95	1
96	1
97	1
98	1
99	1
100	1



To Drive with KTY 84 Input (Ex. Simotive 611DD) or multimeter with the appropriate rating



GENERAL ASSEMBLY	
ITEM	DESCRIPTION
1	ROTOR-STATOR KIT MK-CI-2905
2	SENSOR CABLE #17
3	MOTOR CABLE #12
4	TECHNAI DIRECT DRIVE MOTOR
5	TERMINATOR KIT
6	WATER COOLING INLET
7	WATER COOLING OUTLET
8	O-RINGS
9	SEALS
10	DETAIL 'A'
11	DETAIL 'B'
12	TECHNAI DIRECT DRIVE MOTOR
13	TERMINATOR KIT
14	WATER COOLING INLET
15	WATER COOLING OUTLET
16	O-RINGS
17	SEALS
18	DETAIL 'A'
19	DETAIL 'B'
20	TECHNAI DIRECT DRIVE MOTOR
21	TERMINATOR KIT
22	WATER COOLING INLET
23	WATER COOLING OUTLET
24	O-RINGS
25	SEALS
26	DETAIL 'A'
27	DETAIL 'B'
28	TECHNAI DIRECT DRIVE MOTOR
29	TERMINATOR KIT
30	WATER COOLING INLET
31	WATER COOLING OUTLET
32	O-RINGS
33	SEALS
34	DETAIL 'A'
35	DETAIL 'B'
36	TECHNAI DIRECT DRIVE MOTOR
37	TERMINATOR KIT
38	WATER COOLING INLET
39	WATER COOLING OUTLET
40	O-RINGS
41	SEALS
42	DETAIL 'A'
43	DETAIL 'B'
44	TECHNAI DIRECT DRIVE MOTOR
45	TERMINATOR KIT
46	WATER COOLING INLET
47	WATER COOLING OUTLET
48	O-RINGS
49	SEALS
50	DETAIL 'A'
51	DETAIL 'B'
52	TECHNAI DIRECT DRIVE MOTOR
53	TERMINATOR KIT
54	WATER COOLING INLET
55	WATER COOLING OUTLET
56	O-RINGS
57	SEALS
58	DETAIL 'A'
59	DETAIL 'B'
60	TECHNAI DIRECT DRIVE MOTOR
61	TERMINATOR KIT
62	WATER COOLING INLET
63	WATER COOLING OUTLET
64	O-RINGS
65	SEALS
66	DETAIL 'A'
67	DETAIL 'B'
68	TECHNAI DIRECT DRIVE MOTOR
69	TERMINATOR KIT
70	WATER COOLING INLET
71	WATER COOLING OUTLET
72	O-RINGS
73	SEALS
74	DETAIL 'A'
75	DETAIL 'B'
76	TECHNAI DIRECT DRIVE MOTOR
77	TERMINATOR KIT
78	WATER COOLING INLET
79	WATER COOLING OUTLET
80	O-RINGS
81	SEALS
82	DETAIL 'A'
83	DETAIL 'B'
84	TECHNAI DIRECT DRIVE MOTOR
85	TERMINATOR KIT
86	WATER COOLING INLET
87	WATER COOLING OUTLET
88	O-RINGS
89	SEALS
90	DETAIL 'A'
91	DETAIL 'B'
92	TECHNAI DIRECT DRIVE MOTOR
93	TERMINATOR KIT
94	WATER COOLING INLET
95	WATER COOLING OUTLET
96	O-RINGS
97	SEALS
98	DETAIL 'A'
99	DETAIL 'B'
100	TECHNAI DIRECT DRIVE MOTOR