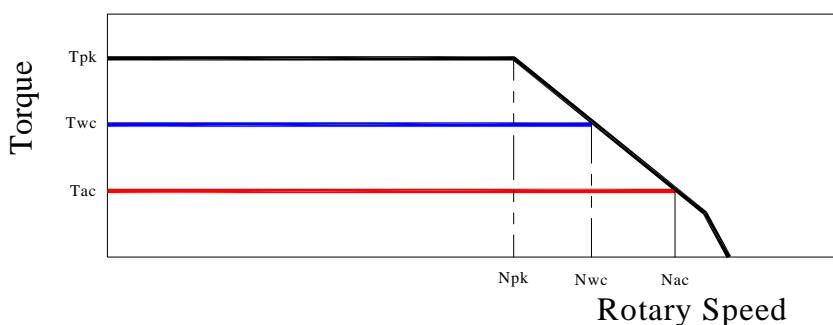


TORQUE MOTOR - MK-CI 175-070 WA

Motor specification	Symbol	Unit	
Number of pole	P		30
Peak Torque	T _{pk}	Nm	168
Continuos Torque (Water Cooling Dt100)	T _{wc}	Nm	91
Continuos Torque (Air Cooling Dt100)	T _{ac}	Nm	40
Stall Torque (Water Cooling)	T _{wsc}	Nm	70
Stall Torque (Air Cooling)	T _{sac}	Nm	31
Ripple Torque (Cogging Torque)	T _r	Nm	5
Power Loss at T _{wc}	P _{wc}	Kw	1,35
Power Loss at T _{ac}	P _{ac}	Kw	0,27
Termal Resistance Water Cooling	R _{thWc}	Kw	0,07
Termal Resistance Air Cooling	R _{thAc}	Kw	0,38
Torque Constant	K _t	Nm/a	8,31
Back EMF Constant	K _e	V/1000 Rpm	502
Maximum Speed at I _{pk} at 600 Vdc	N _{pk}	rpm	320
Maximum Speed at I _{wc} at 600 Vdc	N _{wc}	rpm	620
Maximum Speed at I _{ac} at 600 Vdc	N _{ac}	rpm	750
Winding Resistance (Phase to Phase)	R ₂₀	Ω	5,2
Winding Inductance (Phase to Phase)	L	mh	24,7
Peak Current	I _{pk}	Arms	29
Continuos Current (Water Cooling Dt100)	I _{wc}	Arms	11,2
Continuos Current (Air Cooling Dt100)	I _{ac}	Arms	5
Stall Current at 0 Speed (Water Cooling)	I _{wsc}	Arms	8,5
Stall Current at 0 Speed (Air Cooling)	I _{sac}	Arms	3,8
Maximum Winding Temperature		°C	130
Height of Rotor		mm	70
Height of Stator		mm	120
Stator jacket outer diameter		mm	198

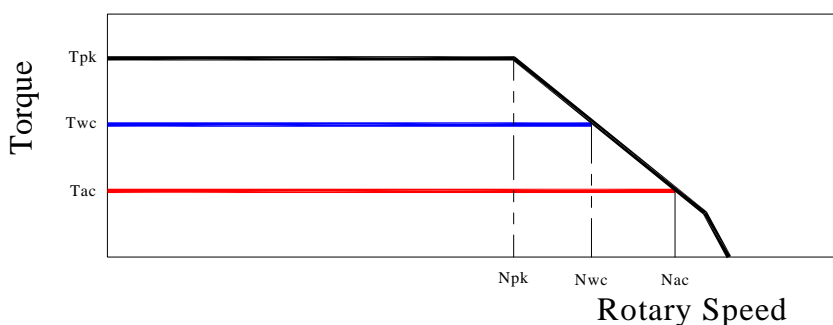
Torque diagram

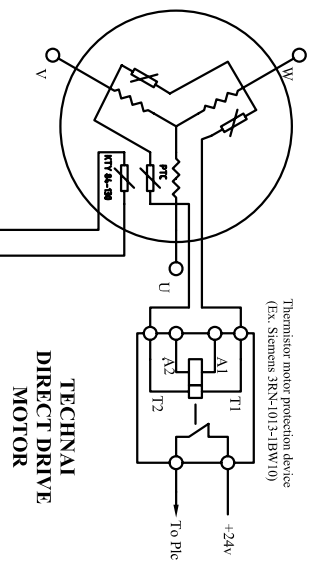
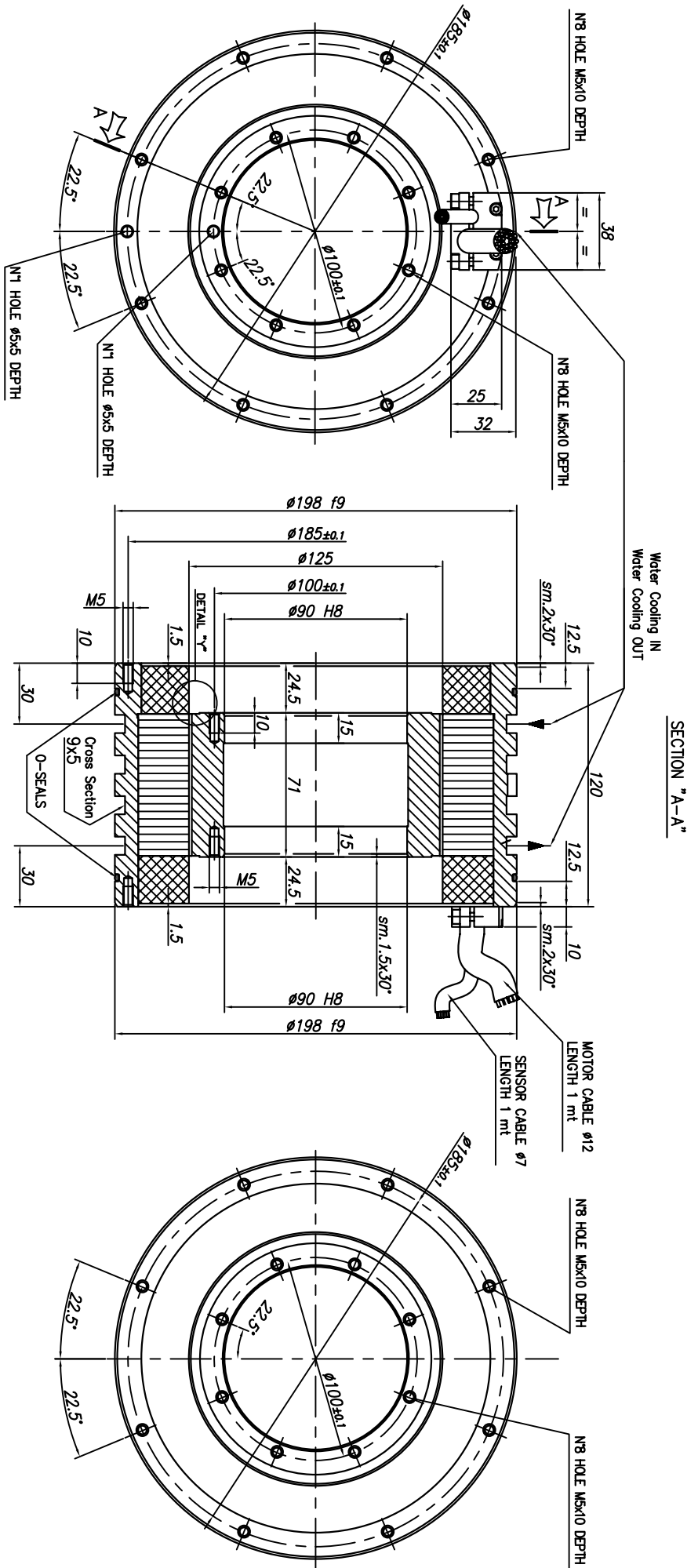


TORQUE MOTOR - MK-CI 175-070 WB

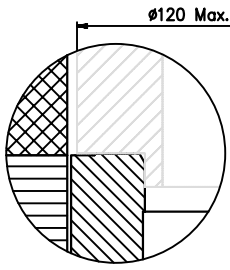
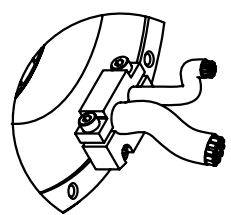
Motor specification	Symbol	Unit	
Number of pole	P		30
Peak Torque	T _{pk}	Nm	168
Continuos Torque (Water Cooling Dt100)	T _{wc}	Nm	91
Continuos Torque (Air Cooling Dt100)	T _{ac}	Nm	40
Stall Torque (Water Cooling)	T _{wsc}	Nm	70
Stall Torque (Air Cooling)	T _{sac}	Nm	31
Ripple Torque (Cogging Torque)	T _r	Nm	5
Power Loss at T _{wc}	P _{wc}	Kw	1,35
Power Loss at T _{ac}	P _{ac}	Kw	0,27
Termal Resistance Water Cooling	R _{thWc}	Kw	0,07
Termal Resistance Air Cooling	R _{thAc}	Kw	0,38
Torque Constant	K _t	Nm/a	3,6
Back EMF Constant	K _e	V/1000 Rpm	215
Maximum Speed at I _{pk} at 600 Vdc	N _{pk}	rpm	850
Maximum Speed at I _{wc} at 600 Vdc	N _{wc}	rpm	1550
Maximum Speed at I _{ac} at 600 Vdc	N _{ac}	rpm	1850
Winding Resistance (Phase to Phase)	R ₂₀	Ω	0,95
Winding Inductance (Phase to Phase)	L	mh	4,6
Peak Current	I _{pk}	Arms	67,7
Continuos Current (Water Cooling Dt100)	I _{wc}	Arms	26,2
Continuos Current (Air Cooling Dt100)	I _{ac}	Arms	11,6
Stall Current at 0 Speed (Water Cooling)	I _{wsc}	Arms	20
Stall Current at 0 Speed (Air Cooling)	I _{sac}	Arms	8,9
Maximum Winding Temperature		°C	130
Height of Rotor		mm	70
Height of Stator		mm	120
Stator jacket outer diameter		mm	198

Torque diagram





To Drive with KTY 84 input (Ex. Simondrive 6.11D(U) or multimeter with the appropriate rating



TECHNAI		GENERAL ASSEMBLY	
ROTOR-STATOR KIT MK-CI 175			
MK-CI 175-070 MP			
SHEET 1 OF 1			

Procedere conforme di istruzioni Tecnaei s.r.l. - Reproduction & diffusion without the authorization of Tecnaei s.r.l.