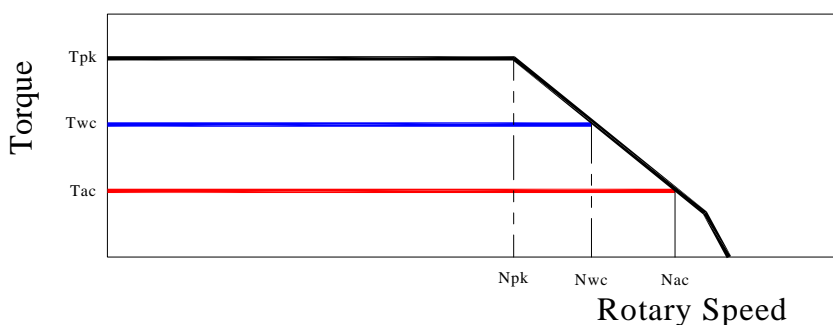


TORQUE MOTOR - MK-CI 175-030 WA

Motor specification	Symbol	Unit	
Number of pole	P		30
Peak Torque	T _{pk}	Nm	72
Continuos Torque (Water Cooling Dt100)	T _{wc}	Nm	37
Continuos Torque (Air Cooling Dt100)	T _{ac}	Nm	17
Stall Torque (Water Cooling)	T _{wsc}	Nm	28
Stall Torque (Air Cooling)	T _{sac}	Nm	13
Ripple Torque (Cogging Torque)	Tr	Nm	2,5
Power Loss at T _{wc}	P _{wc}	Kw	0,75
Power Loss at T _{ac}	P _{ac}	Kw	0,16
Termal Resistance Water Cooling	R _{thWc}	Kw	0,13
Termal Resistance Air Cooling	R _{thAc}	Kw	0,6
Torque Constant	K _t	Nm/a	3,2
Back EMF Constant	K _e	V/1000 Rpm	214
Maximum Speed at I _{pk} at 600 Vdc	N _{pk}	rpm	750
Maximum Speed at I _{wc} at 600 Vdc	N _{wc}	rpm	1550
Maximum Speed at I _{ac} at 600 Vdc	N _{ac}	rpm	1850
Winding Resistance (Phase to Phase)	R ₂₀	Ω	3,6
Winding Inductance (Phase to Phase)	L	mh	11,3
Peak Current	I _{pk}	Arms	29
Continuos Current (Water Cooling Dt100)	I _{wc}	Arms	10,6
Continuos Current (Air Cooling Dt100)	I _{ac}	Arms	5
Stall Current at 0 Speed (Water Cooling)	I _{wsc}	Arms	8,1
Stall Current at 0 Speed (Air Cooling)	I _{sac}	Arms	3,8
Maximum Winding Temperature		°C	130
Height of Rotor		mm	30
Height of Stator		mm	80
Stator jacket outer diameter		mm	198

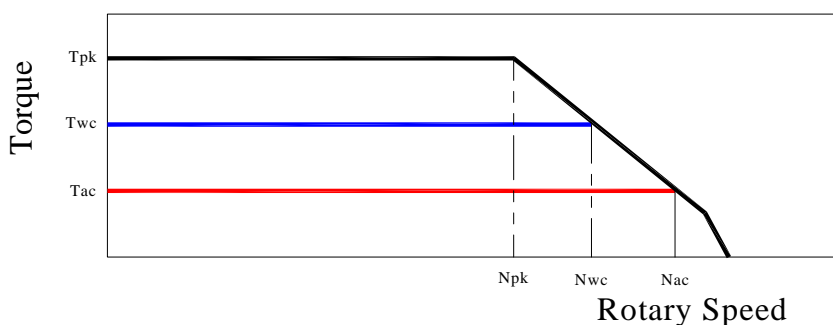
Torque diagram

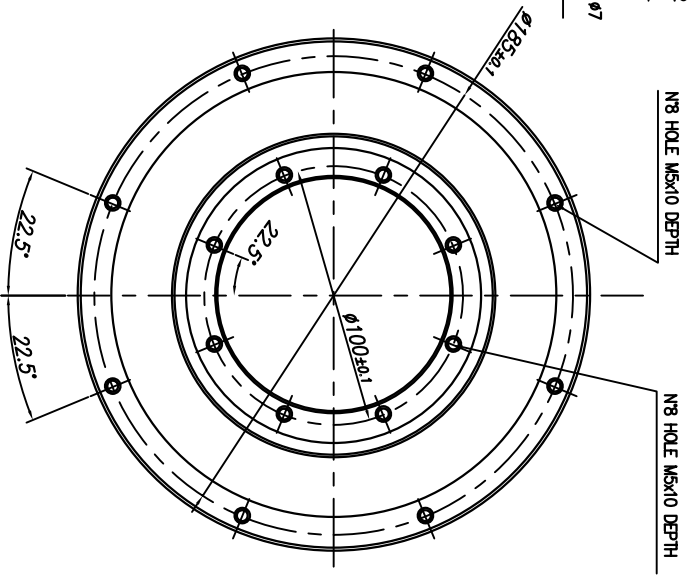
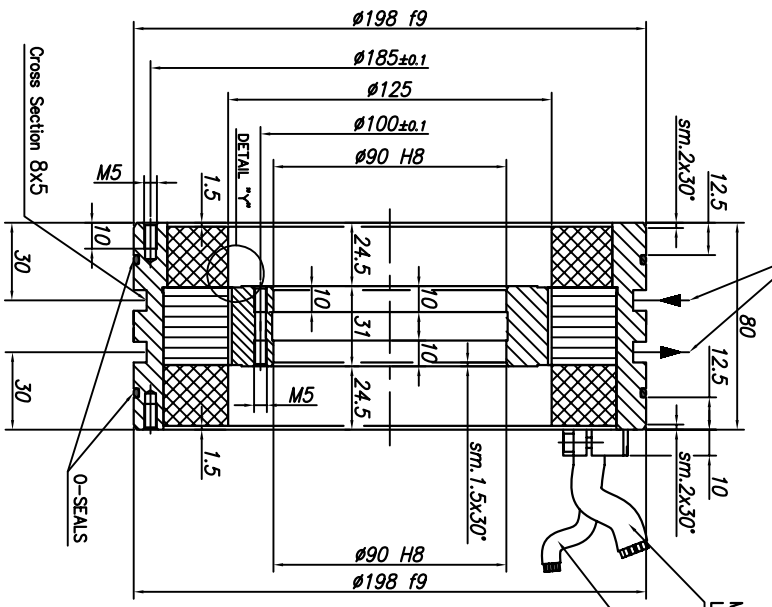
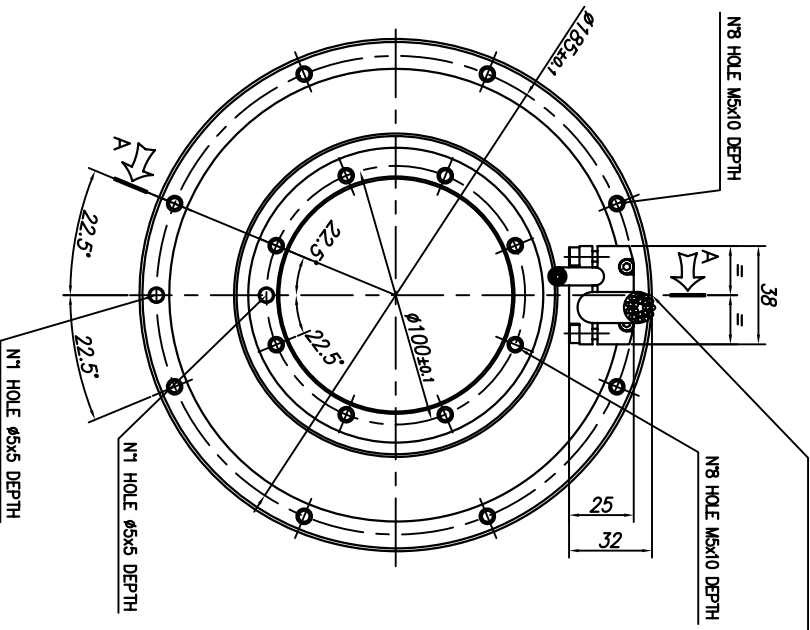


TORQUE MOTOR - MK-CI 175-030 WB

Motor specification	Symbol	Unit	
Number of pole	P		30
Peak Torque	T _{pk}	Nm	72
Continuos Torque (Water Cooling Dt100)	T _{wc}	Nm	37
Continuos Torque (Air Cooling Dt100)	T _{ac}	Nm	17
Stall Torque (Water Cooling)	T _{wsc}	Nm	28
Stall Torque (Air Cooling)	T _{sac}	Nm	13
Ripple Torque (Cogging Torque)	Tr	Nm	2,5
Power Loss at T _{wc}	P _{wc}	Kw	0,75
Power Loss at T _{ac}	P _{ac}	Kw	0,16
Termal Resistance Water Cooling	R _{thWc}	Kw	0,13
Termal Resistance Air Cooling	R _{thAc}	Kw	0,6
Torque Constant	K _t	Nm/a	1,52
Back EMF Constant	K _e	V/1000 Rpm	92
Maximum Speed at I _{pk} at 600 Vdc	N _{pk}	rpm	2000
Maximum Speed at I _{wc} at 600 Vdc	N _{wc}	rpm	3800
Maximum Speed at I _{ac} at 600 Vdc	N _{ac}	rpm	4300
Winding Resistance (Phase to Phase)	R ₂₀	Ω	0,6
Winding Inductance (Phase to Phase)	L	mh	2,1
Peak Current	I _{pk}	Arms	67,7
Continuos Current (Water Cooling Dt100)	I _{wc}	Arms	24,8
Continuos Current (Air Cooling Dt100)	I _{ac}	Arms	11,6
Stall Current at 0 Speed (Water Cooling)	I _{wsc}	Arms	18,9
Stall Current at 0 Speed (Air Cooling)	I _{sac}	Arms	8,9
Maximum Winding Temperature		°C	130
Height of Rotor		mm	30
Height of Stator		mm	80
Stator jacket outer diameter		mm	198

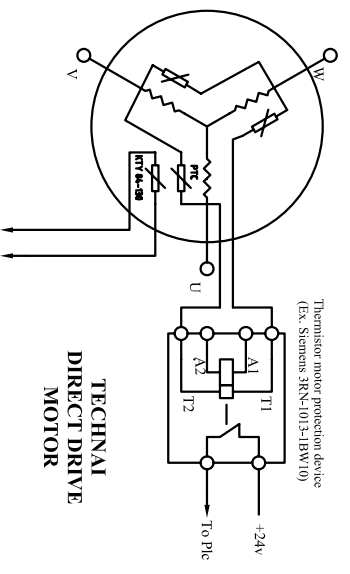
Torque diagram





Water Cooling IN
Water Cooling OUT

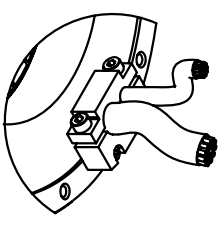
SECTION "A-A"



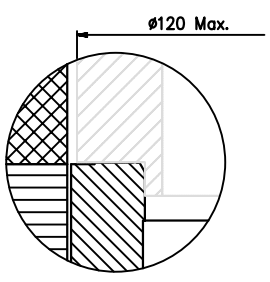
TECHNAI
DIRECT DRIVE
MOTOR

To Drive with KTY 84 input (Ex. Simodrive 611D(U) or multimeter with the appropriate rating

Thermistor motor protection device
(Ex. Siemens 3RN-1013-1BW10)



CABLE OUTPUT
CONFIGURATION
MP



DETAIL "y-y"
ROTOR INTERFACE TO
CUSTOMER SHAFT

TECHNAI	GENERAL ASSEMBLY
ROTOR-STATOR KIT MK-CI 175	
MK-CI 175-030 MP	
1 OF 1	

Copyright © 2010 Technai s.r.l. - Reproduction e diffusion without the authorization of Technai s.r.l. is prohibited.