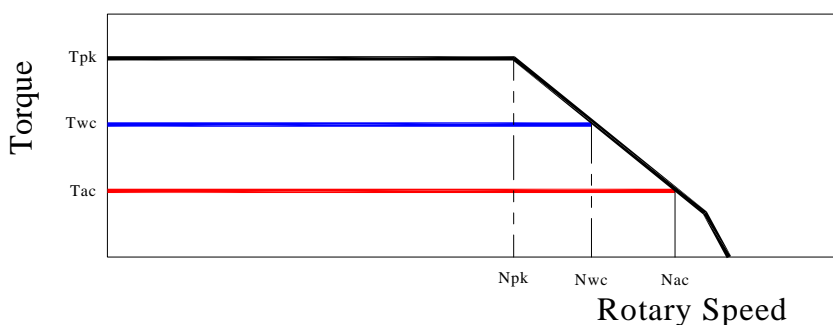
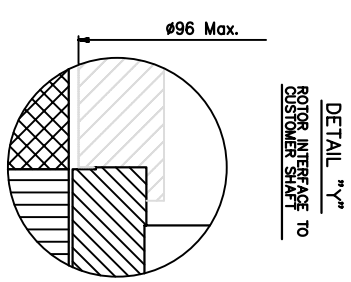
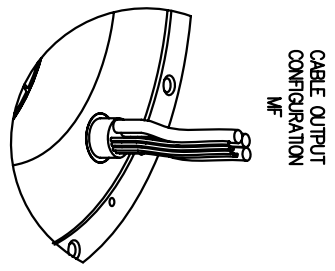
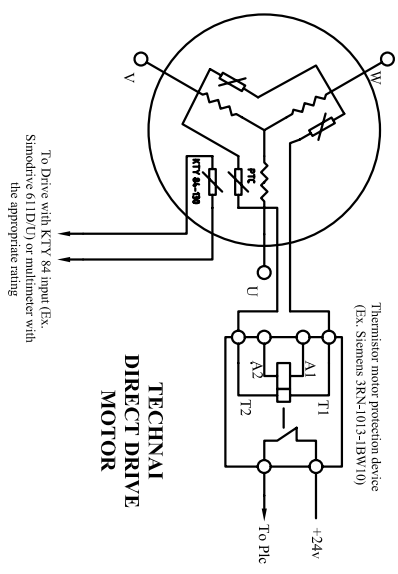
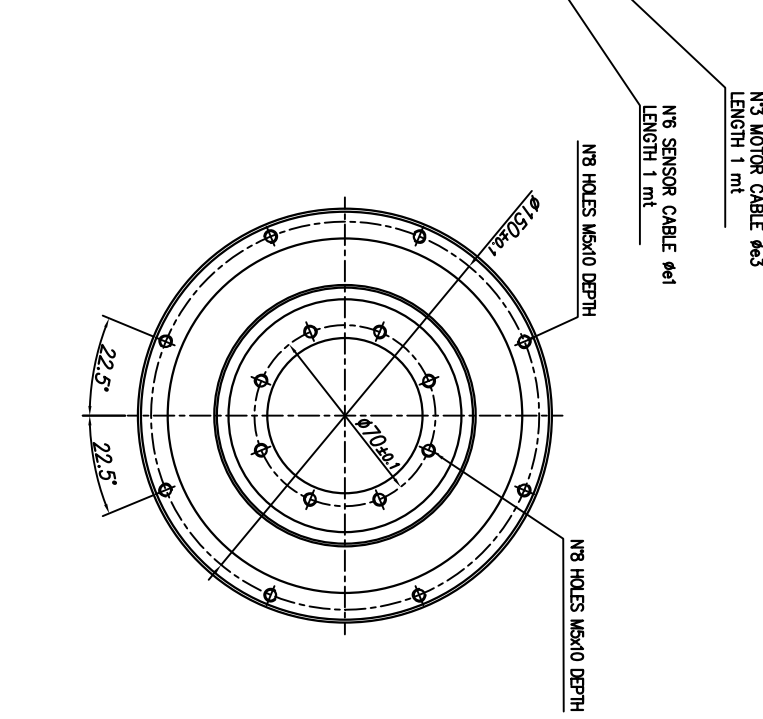
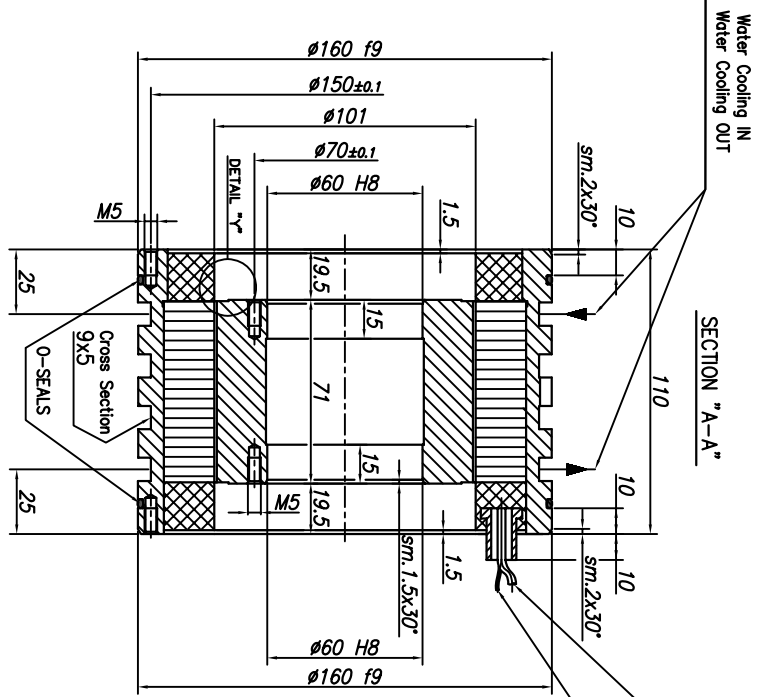
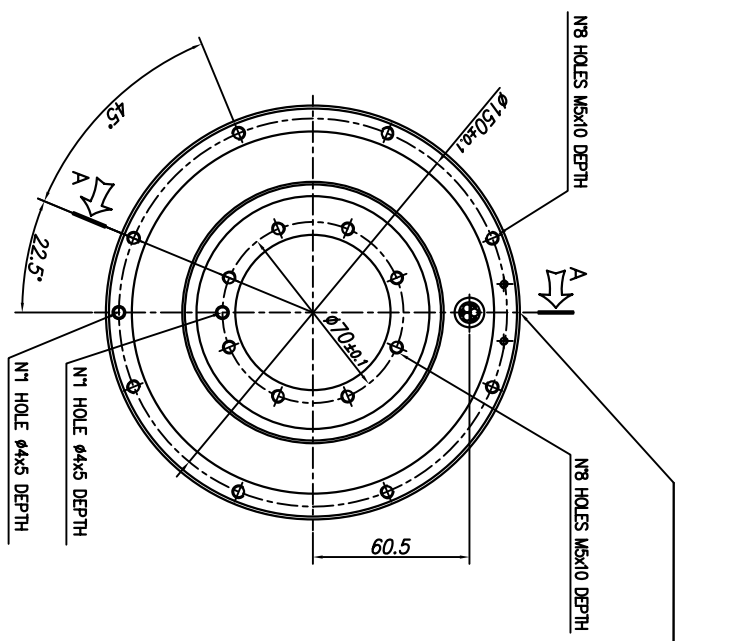


TORQUE MOTOR - MK-CI 140-070 WA

Motor specification	Symbol	Unit	
Number of pole	P		22
Peak Torque	T _{pk}	Nm	89
Continuos Torque (Water Cooling Dt100)	T _{wc}	Nm	46
Continuos Torque (Air Cooling Dt100)	T _{ac}	Nm	19,8
Stall Torque (Water Cooling)	T _{wsc}	Nm	35,2
Stall Torque (Air Cooling)	T _{sac}	Nm	15,2
Ripple Torque (Cogging Torque)	Tr	Nm	0,5
Power Loss at T _{wc}	P _{wc}	Kw	1,2
Power Loss at T _{ac}	P _{ac}	Kw	0,2
Termal Resistance Water Cooling	R _{thWc}	Kw	0,09
Termal Resistance Air Cooling	R _{thAc}	Kw	0,5
Torque Constant	K _t	Nm/a	5,4
Back EMF Constant	K _e	V/1000 Rpm	329
Maximum Speed at I _{pk} at 600 Vdc	N _{pk}	rpm	450
Maximum Speed at I _{wc} at 600 Vdc	N _{wc}	rpm	900
Maximum Speed at I _{ac} at 600 Vdc	N _{ac}	rpm	1000
Winding Resistance (Phase to Phase)	R ₂₀	Ω	7,3
Winding Inductance (Phase to Phase)	L	mh	20
Peak Current	I _{pk}	Arms	23,5
Continuos Current (Water Cooling Dt100)	I _{wc}	Arms	8,6
Continuos Current (Air Cooling Dt100)	I _{ac}	Arms	3,7
Stall Current at 0 Speed (Water Cooling)	I _{wsc}	Arms	6,6
Stall Current at 0 Speed (Air Cooling)	I _{sac}	Arms	2,8
Maximum Winding Temperature		°C	130
Height of Rotor		mm	70
Height of Stator		mm	110
Stator jacket outer diameter		mm	160

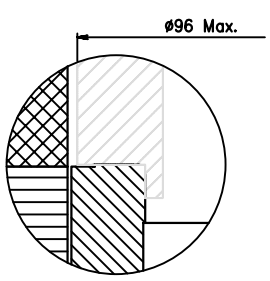
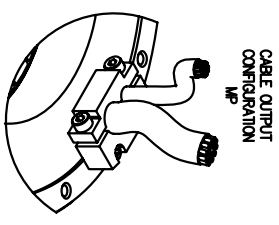
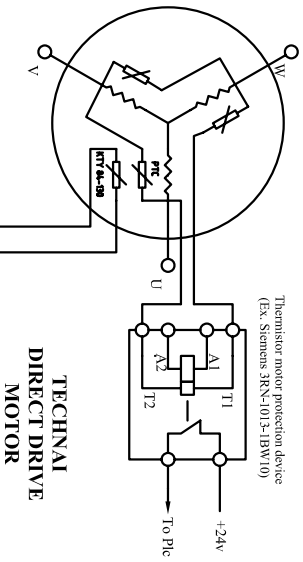
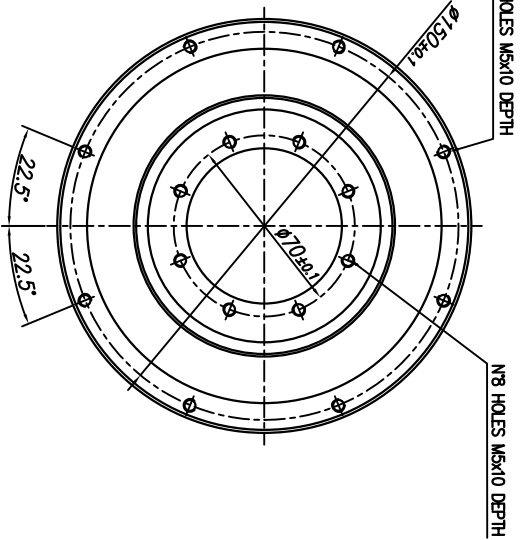
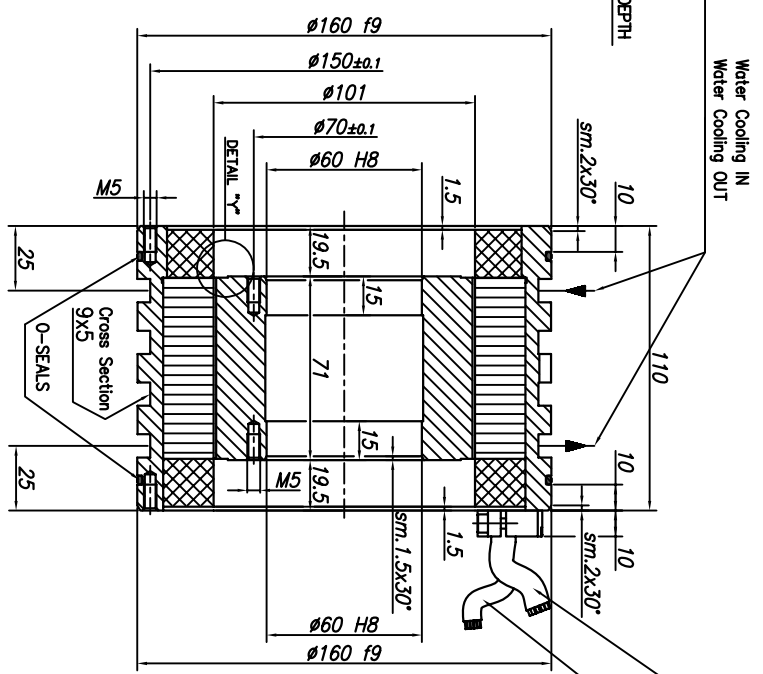
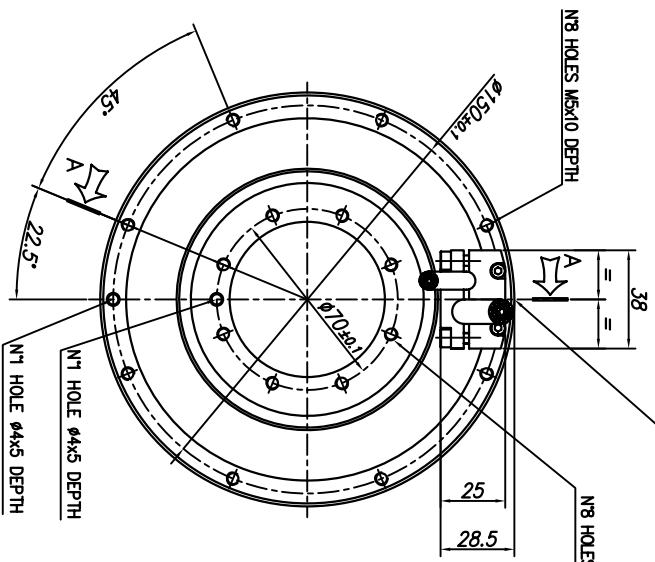
Torque diagram





TECHNAI		GENERAL ASSEMBLY	
ROTOR-STATOR KIT MK-CI 140		SHEET 1 OF 1	
MK-CI 140-070 MF		1	

Procedura conforme al Protocollo Tecnai s.r.l. - Reproduction is forbidden without the authorization of the author.



TECHNAI		GENERAL ASSEMBLY	
ROTOR-STATOR KIT MK-CI 140		SHEET 1 OF 1	
MK-CI 140-070 MP3		1	
1		1	