

TEAM



**TLT-180,
COLIBRI**
DD TILTING
ROTARY TABLE

TEAM



DIRECT-DRIVE MOTION TECHNOLOGY

MOTION TECHNOLOGY

TLT-180 COLIBRÌ DD TILTING ROTARY TABLE

Technai Team S.p.A. was established in 1993 upon a sound basis of both mechanical and electromagnetic engineering skills. Today is widely regarded as one of the major specialists in Direct Drive technology applied to Machine Tool and Industrial Automation.

Its product range is divided into two main categories:

Components, that is torque motors elements, and Systems like milling heads, rotary and tilting tables, rotary actuators and individual dedicated function's modules.

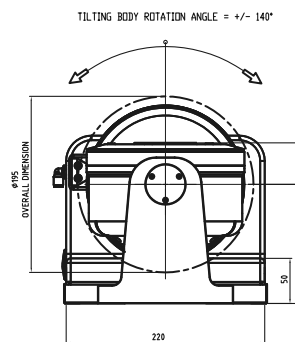
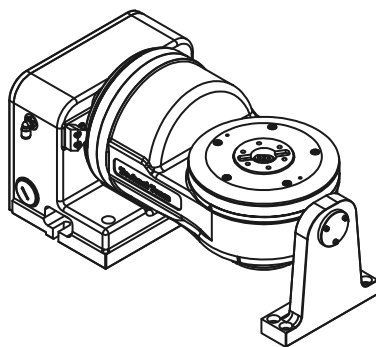
PRODUCT OVERVIEW

Colibrì 180 is a high dynamic 2-Axes tilting and rotary table, powered by Direct Drive torque motors.

The product is small, compact and extremely lightweight.



The table is made of two modules, each one equipped with torque motor, bearing, encoder and clamping device. The customer is left only the connection of the utilities (electrical and pneumatic) and of water cooling system, if present.



TECHNICAL SPECIFICATIONS

TECHNICAL DATA	
Technical Direct Drive servo motor Rotary and tilting axis	MK-CI 140-30-WA
Continuous torque / Max torque (natural air cooled)	8.6 Nm / 38 Nm
Feedback encoder type Renishaw	Signum - sin / cos 1Vpp / RS 422
Feedback resolutions	0.0001°
Positioning accuracy	+/- 20 sec.
Positioning repeatability	+/- 3 sec.
Max allowable axis acceleration	50 rad/sec ²
Max programmable speed (rotary/tilting)	200 rpm / 100 rpm
Typical position gain (kv)	10 -:- 20
Max allowable work piece volume	Dia. 180 x H100 mm
Allowable load	6 Kg
Total Weight	25 Kg



DIRECT-DRIVE MOTION TECHNOLOGY

TECHNAI TEAM S.P.A.

Via Gelada, 15
21015 Lonate Pozzolo (VA) Italy
Tel. +39 0331 661624
Fax +39 0331 301732

www.technai.it
technai@technai.it

